

Falcon® CultureSlides

- ▶ Safe and easy chamber removal for microscopic analysis
- ▶ Innovative sealing design

Falcon CultureSlides for *in situ* analysis

Falcon CultureSlides allow you to culture cells and then analyze them on a glass microscope slide. Cells are grown in a plastic chamber affixed to a specially prepared glass microscope slide.

Cells can be fixed and stained in place without disruption of the cell monolayer. The chamber is easily and safely removed with an easy-to-use, disposable Safety Removal Tool.

Designed for consistent cell culture results

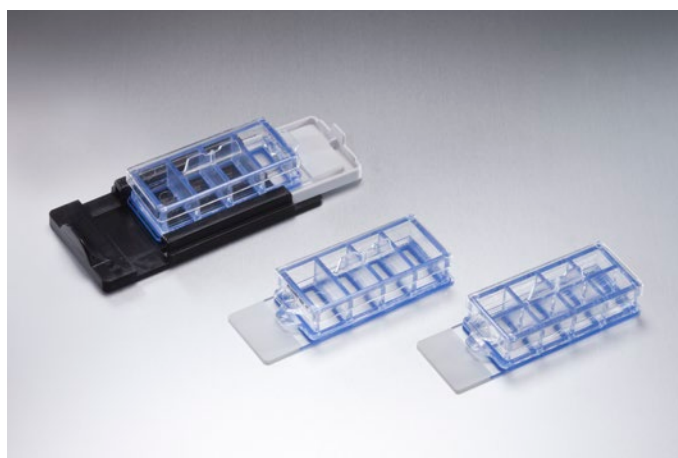
- ▶ Specially cleaned and triple-rinsed glass slides
- ▶ Performance validated with HEp-2 and BAE cells
- ▶ Tested for 72-hour confluency with MRC-5 and BAE cells

Features

- ▶ 1.2 mm beveled-edge slide, 25 mm x 75 mm, soda-lime glass
- ▶ Pressure-sensitive, biocompatible, non-migrating, acrylic-adhesive gasket
- ▶ Blue hydrophobic border defines cell culture areas
- ▶ Polystyrene vessel, lid, and tool
- ▶ Supplied with disposable Safety Removal Tool
- ▶ Wells numbered for easy identification
- ▶ Sterile
- ▶ Trays designed for use in incubator
- ▶ Shelf life specified on each package

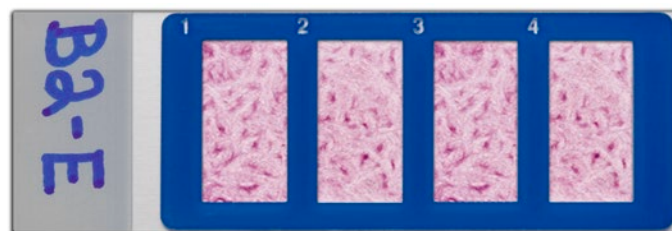
Partial list of cells cultured on Falcon CultureSlides

- ▶ Glioblastoma
- ▶ NLBT-2 line
- ▶ HEp-2 cells
- ▶ MRC-5 cells
- ▶ Fibroblasts: human foreskin
- ▶ E6 cells infected with HSV, CMV
- ▶ FS cells infected with HSV, CMV
- ▶ Primary rat skeletal muscle (with Corning® Matrigel® Matrix)
- ▶ Primary ventral spinal cord (with PDL/Laminin)
- ▶ Primary neurons (with Fibronectin, Laminin, Polyornithine, ECM Fragments)
- ▶ Primary bovine aortic endothelium (Fibronectin)
- ▶ PC-12 cells (Polyornithine/Laminin; PDL/Laminin)
- ▶ Primary SC6 rat cells (Collagen)
- ▶ Glial cells (Tenascin)



Simple Vessel Removal for Microscopic Analysis

A simple Safety Removal Tool lifts the plastic vessel off the glass slide. The adhesive gasket remains with the vessel, not on the slide, facilitating further processing or placement of coverslips.



Photograph of primary bovine aortic endothelial cells grown on Falcon CultureSlides and stained with crystal violet. The blue hydrophobic grid defines the cell culture area. A white writing patch provides clear sample identification. Well location numbers etched in the grid are clearly visible.

Falcon CultureSlides Ordering Information

Cat. No.	Description	Total Volume per Well (mL)	Working Volume per Well (mL)	Qty/ Pk	Qty/ Cs
4 well					
354104	1.7 cm ²	1.5-1.7	0.7-1.25	12	96
354114	1.7 cm ²	1.5-1.7	0.7-1.25	12	24
8 well					
354108	0.7 cm ²	0.7-0.75	0.3-0.5	12	96
354118	0.7 cm ²	0.7-0.75	0.3-0.5	12	24

Tips

- ▶ For enhanced cell performance, Corning BioCoat™ CultureSlides are available with pre-applied matrix proteins. For more information, visit www.corning.com/lifesciences