

# Corning® LSE™ and Liquid Handling Products



CORNING

LSE™ Products

# Corning® LSE™ – Setting a New Standard in Laboratory Products and Equipment

Corning Life Sciences is pleased to introduce our new line of Corning LSE Products that includes liquid handling, shaker, centrifugation and constant temperature instruments. For more than 90 years, Corning has been a leading developer, manufacturer, and supplier of innovative scientific laboratory products for life science, chemistry and industrial applications. Leveraging our materials science and process engineering expertise, we are recognized worldwide for our specialty plasticware and glassware products.

The new line of Corning LSE Products is an exciting expansion of our product offering. These instruments are not only valuable research tools, but are also complementary to the popular Corning brand plasticware and glassware used daily by our customers worldwide. This product expansion is part of our continuing effort to innovate and provide our customers with the best range of solutions for advancing research.

## Contents

### Corning Liquid Handling Products

Corning Lambda™ Plus Starter Kit .....	1
Corning Lambda Plus Pipettors .....	1
8-Pette® and 12-Pette Multichannel Pipettors .....	2
Transtar®-96 Well Liquid Transfer System .....	2
DeckWorks™ Reload System .....	3
DeckWorks Reload System Starter Kits .....	3
DeckWorks Low Binding Hinged Rack Barrier Pipet Tips .....	3
Corning Stripettor™ Plus Pipetting Controller .....	4
Stripette® Serological Pipets .....	4

### Corning LSE Products and Costar® Microcentrifuge Tubes

Corning LSE Vortex Mixer .....	5
Corning LSE Digital Microplate Shaker .....	5
Corning LSE Low Speed Orbital Shaker .....	6
Corning LSE Orbital Shaker .....	6
Corning LSE Mini Microcentrifuge .....	7
Corning LSE High Speed Microcentrifuge .....	7
Corning LSE Compact Microcentrifuge .....	8
Costar Snap Cap Polypropylene Microcentrifuge Tubes .....	9
Corning LSE Digital Dry Bath Heater .....	9-10

### Corning Equipment

Corning PC-220 Hot Plate/Stirrer .....	10
Corning Scholar™ 170 Hot Plate .....	10
Corning Digital Hot Plates, Stirrers, and Stirring Hot Plates .....	11
Temperature Controller and Accessories .....	12



# Corning® Liquid Handling Products



## Corning Lambda™ Plus Starter Kit

The Lambda Plus Starter Kit contains four Lambda Plus Single-Channel pipettors conveniently packaged with useful accessories (manual, calibration key, color-coded rings, tube of piston grease and identification stickers). The kit includes:

- ▶ Cat. No. 4071 Lambda Plus Single-Channel Pipettor, 0.5 to 10  $\mu$ L
- ▶ Cat. No. 4072 Lambda Plus Single-Channel Pipettor, 2 to 20  $\mu$ L
- ▶ Cat. No. 4074 Lambda Plus Single-Channel Pipettor, 20 to 200  $\mu$ L
- ▶ Cat. No. 4075 Lambda Plus Single-Channel Pipettor, 100 to 1000  $\mu$ L
- ▶ Cat. No. 4078 Universal Carousel Rack for six single-channel pipettors
- ▶ Corning DeckWorks™ Pipet Tips:  
Cat. No. 4135 (10  $\mu$ L), Cat. No. 4138 (200  $\mu$ L), and Cat. No. 4140 (1000  $\mu$ L)
- ▶ Free Gift: 1 Corning insulated lunch bag

### Lambda Plus Starter Kit Ordering Information

Cat. No.	Description	Qty/Pk	Qty/Cs
4069	Lambda Plus Starter Kit	1	1



## Corning Lambda Plus Single-Channel, 8-Channel and 12-Channel Pipettors

Lambda Plus Pipettors have been engineered to provide the highest levels of accuracy, reproducibility, and comfort. Available in single-, eight- and twelve-channel configurations, all Lambda Plus Pipettors feature smooth plunger movement and extremely low pipetting forces. Volume can be set by turning either the thumb wheel or the plunger button, and a locking mechanism prevents accidental change.

The Lambda Plus Pipettors have been designed to maintain their calibration, even after repeated use and autoclaving. A key is included with each pipettor for easy in-house calibration.

- ▶ Factory calibrated to strict ISO 8655 standards
- ▶ 3-year warranty
- ▶ Fully autoclavable and UV resistant
- ▶ Designed for universal fit with all common brands of pipet tips
- ▶ Adjustable tip ejector

### Lambda Plus Single-Channel Pipettor Ordering Information

Cat. No.	Volume Range ( $\mu$ L)	Accuracy	Precision	Tip ( $\mu$ L)	Qty/Cs
4070	0.2-2.0	$\pm 12$ to $\pm 1.5\%$	$< 6.0$ to $< 0.7\%$	10	1
4071	0.5-10	$\pm 4.0$ to $\pm 0.5\%$	$< 4.0$ to $< 0.4\%$	10	1
4072	2-20	$\pm 4.0$ to $\pm 0.8\%$	$< 3.0$ to $< 0.4\%$	200	1
4073	10-100	$\pm 1.6$ to $\pm 0.8\%$	$< 0.8$ to $< 0.3\%$	200	1
4074	20-200	$\pm 1.2$ to $\pm 0.6\%$	$< 0.6$ to $< 0.3\%$	200	1
4075	100-1,000	$\pm 1.0$ to $\pm 0.6\%$	$< 0.45$ to $< 0.25\%$	1,000	1



Lambda Plus Single-Channel Pipettor



Lambda Plus 8-Channel Pipettor



Lambda Plus 12-Channel Pipettor



8- and 12-Pette Multichannel Pipettors



Transtar Disposable Cartridge

### Lambda™ Plus 8-Channel and 12-Channel Pipettor Ordering Information

Cat. No.	Volume Range (µL)	Channels	Accuracy	Precision	Tip (µL)	Qty/Cs
4080	1-10	8	±8.0 to ±2.0%	<6.0 to <1.2%	10	1
4081	5-50	8	±4.0 to ±1.6%	<2.5 to <0.6%	200	1
4082	20-200	8	±3.0 to ±1.0%	<1.5 to <0.6%	200	1
4083	50-300	8	±1.6 to ±1.0%	<1.5 to <0.6%	200/300	1
4084	1-10	12	±8.0 to ±2.0%	<6.0 to <1.2%	10	1
4085	5-50	12	±4.0 to ±1.6%	<2.5 to <0.6%	200	1
4086	20-200	12	±3.0 to ±1.0%	<1.5 to <0.6%	200	1
4087	50-300	12	±1.6 to ±1.0%	<1.5 to <0.6%	200/300	1

### Accessories

4078	Universal carousel rack for six single-channel pipettors
4079	Universal linear rack for six pipettors (six single-channel, maximum of four 8-channel or 12-channel pipettors)
4088	8- or 12-channel pipettor stand. Holds one Lambda Plus 8-Channel or 12-Channel Pipettor

### 8-Pette® and 12-Pette Multichannel Pipettors

These pipettors feature a unique, ergonomic trigger-style aspiration and dispense control mechanism designed to reduce thumb fatigue during repetitive pipetting. Volume range is 20 to 200 µL and can be adjusted with a vernier-scale spindle. Autoclavable.

### 8-Pette and 12-Pette Multichannel Pipettors Ordering Information

Cat. No.	Volume Range (µL)	Channels	Qty/Cs
4880	20-200	12	1
4888	20-200	8	1

### Transtar-96® Well Liquid Transfer System

- ▶ The Costar® Transtar-96 System is a portable, autoclavable liquid handling device for use with 96 well plates
- ▶ A sterile 96 tip disposable cartridge, which loads into the Transtar system, enables liquids to be aspirated, transferred and dispensed over a volume range of 25 to 200 µL in 5 µL increments
- ▶ The Transtar-96 System is ideal for changing cell culture media and screening monoclonal antibodies
- ▶ Transtar-96 System accuracy is rated at ±5% at all volume levels

### Transtar-96 Well Liquid Transfer System Ordering Information

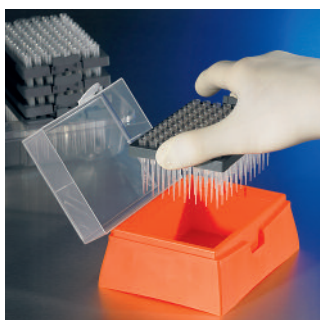
Cat. No.	Description	Sterile	Qty/Pk	Qty/Cs
7605	Transtar-96, adjustable-volume pipettor	N/A	1	1
7606	Transtar elevator	N/A	1	1
7610	Transtar disposable cartridges	Yes	1	24
4876	Transtar disposable reservoir liner, open	Yes	1	100
4877	Transtar disposable reservoir liner, 12-channel	Yes	1	100
4878	Transtar disposable reservoir liner, 8-channel	Yes	1	100

### DeckWorks™ Reload Systems

Corning® DeckWorks reload systems are available in 10 µL, 200 µL, 300 µL and 1000 µL sizes and allow for convenient and economical reloading of durable Corning DeckWorks hinged racks. DeckWorks reload decks are packaged in transparent trays for easy tip identification, require no transfer devices, save space and minimize packaging waste. Although the pipet tips are made from virgin medical-grade resins, the reload decks and rack bases are manufactured from 100% recycled polypropylene. Nonsterile decks and racks are steam autoclavable.



Remove deck from reload system.



Insert deck into hinged rack.

#### DeckWorks Reload Systems Ordering Information

Cat. No.	Volume Range (µL)	Color	Sterile	Decks/Pack	Tips/Pack	Packs/Case
4125	0.1-10	Natural	No	10	960	4
4126	1-200	Natural	No	10	960	4
4127	1-200	Yellow	No	10	960	4
4128	1-300	Natural	No	10	960	4
4129	100-1000	Natural	No	8	768	4

### DeckWorks Reload Systems Starter Kits

DeckWorks starter kits contain one DeckWorks reload system with standard tips and empty hinged racks.

- ▶ 10 empty racks accompany 10 µL, 200 µL and 300 µL volume tips
- ▶ 8 empty racks accompany 1000 µL volume tips

#### DeckWorks Starter Kits Ordering Information

Cat. No.	Volume Range (µL)	Color	Sterile	Decks/Pack	Tips/Pack	Packs/Case
4130	0.1-10	Natural	No	10	960	1
4131	1-200	Natural	No	10	960	1
4132	1-200	Yellow	No	10	960	1
4133	1-300	Natural	No	10	960	1
4134	100-1000	Natural	No	8	768	1

### DeckWorks Low Binding Hinged Rack Barrier Pipet Tips

Corning universal fit tips in hinged DeckWorks racks are available in 10 µL, 200 µL, 300 µL and 1000 µL sizes. The 10 µL, 300 µL and 1000 µL tips are extended length and allow for improved access into micro (1.5 mL) and standard conical bottom (15/50 mL) centrifuge tubes. Robust 96-tip racks are designed for repeated steam autoclave cycles and can be reused by removing the empty grey tip deck and replacing it with a new reload deck of 96 tips from the DeckWorks reload system.

Corning DeckWorks low binding barrier tips feature an inert, high-density polyethylene barrier to eliminate aerosol carryover contamination during critical pipetting procedures. DeckWorks low binding barrier tips will not trap liquids or inhibit PCR in the event of over pipetting.

#### DeckWorks Low Binding Hinged Rack Barrier Tips Ordering Information

Cat. No.	Volume Range (µL)	Color	Sterile	Racks/Pack	Tips/Pack	Packs/Case
4135	0.1-10	Natural	Yes	10	960	4
4136	1-20	Natural	Yes	10	960	4
4137	1-100	Natural	Yes	10	960	4
4138	1-200	Natural	Yes	10	960	4
4139*	1-200	Natural	Yes	8	768	4
4140	100-1000	Natural	Yes	8	768	4

\*The unique design of this patented extended-length tip allows standardization across a wide range of 20 µL, 50 µL, 100 µL and 200 µL pipettors.



Low Binding Hinged Rack Barrier Pipet Tips





Stripettor Plus Pipetting Controller with pipet



Stripettor Plus Pipetting Controller in charging position



Stripettor Plus Pipetting Controller in storage position



Stripette Serological Pipets



Aspirator

## Corning® Stripettor™ Plus Pipetting Controller

The new Corning Stripettor Plus is comfortable, lightweight, and designed for use with most brands of serological pipets. Speed range is adjustable via a control wheel on the back of the instrument, and aspirating and dispensing can be finely controlled by the pressure-sensitive buttons. A convenient wall hanger, charging stand, and spare filters are included with the Stripettor Plus, and when fully charged, the high capacity Lithium-Ion battery allows continuous pipetting for up to 4.5 hours. A battery indicator light lets the user know when it's time to recharge; the Stripettor Plus can be used while charging. The charging stand allows storage on its back, even with pipet inserted.

- Ergonomic, comfortable design
- Wall hanger, charging stand, charging power supply, and spare filters included
- Variable speed range and pressure sensitive control buttons
- Settings for blow out or slow “gravity” dispensing
- Compatible with pipets from 1 mL to 100 mL
- Includes hydrophobic, PTFE 0.2 µm filters
- Fast aspiration and dispensing speed at highest setting: 25 mL in 2.5 seconds
- Li-Ion battery provides 4.5 hours of continuous use

### Stripettor Plus Ordering Information

Cat. No.	Description	Voltage	Qty/Cs
4090	Stripettor Plus with three 0.2 µm filters, wall hanger and charger	120V, 50/60Hz	1
4091	Stripettor Plus with three 0.2 µm filters, wall hanger and charger	230V, 50/60Hz, EU Plug	1
4092	Stripettor Plus with three 0.2 µm filters, wall hanger and charger	230V, 50/60Hz, UK Plug	1
4093	Stripettor Plus with three 0.2 µm filters, wall hanger and charger	100V, 50/60Hz, JP Plug	1

### Accessories

4094	PTFE autoclavable filter, 0.2 µm	5
4095	PTFE autoclavable filter, 0.45 µm	5
4096	Replacement silicone pipet holder	1

## Stripette® Serological Pipets

Stripette pipets are sterile, nonpyrogenic, and RNase-/DNase-free and come with four packaging options. For a full listing of Corning pipets, please visit [www.corning.com/lifesciences](http://www.corning.com/lifesciences).

### Stripette Pipets Ordering Information

Cat. No.	Capacity (mL)	Graduations (mL)	Negative Grads. (mL)	Color Coded Stripe	Qty/Pk	Qty/Cs
<i>Individually Wrapped, Paper/Plastic Wrap</i>						
4487	5	1/10	2.5	Blue	50/bag	200
4488	10	1/10	3.0	Orange	50/bag	200
4489	25	2/10	10.0	Red	25/bag	200
4490	50	1/2	10.0	Purple	25/bag	100
4485	1	1/100	0.2	Yellow	50/bag	1,000
4486	2	1/100	0.2	Green	50/bag	1,000

## Corning Aspirator

### Aspirator and Accessories Ordering Information

Cat. No.	Description
4930	Aspirator device (includes hand piece, grommet for accessory attachment, and single-channel adapter for use with disposable pipet tips)
4931	8-channel adapter for use with disposable pipet tips
9016	Costar® aspirating pipet, without graduations, unplugged, sterile, paper/plastic wrapped

## Corning® LSE Products



Vortex Mixer

### Corning LSE Vortex Mixer

The Corning variable speed LSE Vortex Mixer provides fast, efficient mixing with minimal vibration. The unit features a powerful, counter-balanced motor drive, continuous or “touch” mix modes. A range of accessories are available for all common sample tubes and containers.

- ▶ Variable speed for gentle to vigorous mixing
- ▶ Optimized counter balance for minimal vibration
- ▶ Lightweight and portable
- ▶ Includes cup head for all standard microtubes and centrifuge tubes
- ▶ Mix a variety of tubes and plates with optional accessory heads
- ▶ Touch and continuous mix modes

#### LSE Vortex Mixer Ordering Information

Cat. No.	Description	Voltage	Plug Type	Speed (rpm)	Weight (kg)	Dimensions (cm)	Qty/ Cs
6775	LSE Vortex Mixer	120V, 50/60Hz	US	0-3400	2.2	14 x 16 x 13	1
6776	LSE Vortex Mixer	230V, 50/60Hz	EU	0-2850	2.2	14 x 16 x 13	1
6777	LSE Vortex Mixer	230V, 50/60Hz	UK	0-2850	2.2	14 x 16 x 13	1
6778	LSE Vortex Mixer	100V, 50/60Hz	JP	0-2850	2.2	14 x 16 x 13	1

#### Accessories

480100	Optional head, 3 inch diameter dimpled disk for multiple tubes						1
480101	Optional head for 24 x 1.5/2.0 mL tubes, 24 x 0.5 mL tubes and 32 x 0.2 mL tubes (or 4 tube strips)						1
480102	Optional head for 1 microplate or 64 x 0.2 mL tubes or 8 x 0.2 mL tube strips						1
480103	Optional head for 8 x 15 mL and 8 x 12/13 mm diameter tubes						1
480104	Optional head attachment for 6 x 50 mL tubes						1
480105	Optional head for 12 x 1.5/2.0 mL tubes, held horizontally						1
480106	Optional head for 4 x 15 mL tubes, held horizontally						1
480107	Optional head for 2 x 50 mL tubes, held horizontally						1



Accessory Heads for LSE Vortex Mixer

### Corning LSE Digital Microplate Shaker

The Corning LSE Digital Microplate Shaker features digital control of shaking speed and run time. A single control knob is used to set parameters, and values are shown on a large 3-digit display. A sturdy base encloses the motor for quiet, vibration-free operation.

The included stainless steel platform accommodates up to 4 microplates (standard or deep well) and the shaker is safe for use in temperature controlled environments from 4 to 65°C.

- ▶ Large capacity - process up to 4 microplates
- ▶ 3 mm orbit for resuspending, homogenizing or vortexing
- ▶ Large digital display with single-knob control
- ▶ Suitable for cold room or incubator use



Digital Microplate Shaker

#### LSE Digital Microplate Shaker Ordering Information

Cat. No.	Description	Voltage	Plug Type	Speed (rpm)	Weight (kg)	Dimensions (cm)	Qty/ Cs
6780-4	LSE Digital Microplate Shaker	120V, 50/60Hz	US	100-1400	4.3	16.8 x 27.9 x 15.3	1
6781-4	LSE Digital Microplate Shaker	230V, 50/60Hz	EU	100-1200	4.3	16.8 x 27.9 x 15.3	1
6782-4	LSE Digital Microplate Shaker	230V, 50/60Hz	UK	100-1200	4.3	16.8 x 27.9 x 15.3	1



Low Speed Orbital Shaker

### Corning® LSE™ Low Speed Orbital Shaker

The Corning LSE Low Speed Orbital Shaker includes a 30 x 30 cm platform and is ideal for staining and destaining gels, washing blots and general mixing applications. Speed can be set from 3 to 60 rpm and the timer can be set for up to 2 hours or for continuous operation.

- ▶ Ideal for staining and washing of fragile gels
- ▶ Gentle motion prevents foaming of liquids
- ▶ Simple analog control with easy-turn knobs
- ▶ 19 mm orbit for blotting, gel staining and general mixing
- ▶ Safe for cold room and incubator use

#### LSE Low Speed Orbital Shaker Ordering Information

Cat. No.	Description	Voltage	Plug Type	Speed (rpm)	Weight (kg)	Dimensions (cm)	Qty/Cs
6780-FP	LSE Low Speed Orbital Shaker	120V, 50/60Hz	US	3-60	5	25.5 x 32 x 16	1
6781-FP	LSE Low Speed Orbital Shaker	230V, 50/60Hz	EU	3-60	5	25.5 x 32 x 16	1
6782-FP	LSE Low Speed Orbital Shaker	230V, 50/60Hz	UK	3-60	5	25.5 x 32 x 16	1

### Corning LSE Orbital Shaker

The Corning LSE Orbital Shaker meets a variety of shaking and mixing applications. A powerful brushless motor and counter-balanced shaker mechanism provide smooth operation for years of trouble-free use. Different platforms (order separately) are available and are easily interchangeable.

- ▶ Two stainless steel platform options
- ▶ 19 mm orbit for aeration of cultures and staining gels
- ▶ Large digital display with single-knob control
- ▶ Digital control of shaking speed and time
- ▶ Safe for cold room or incubator use
- ▶ Maximum capacity: 4 x 1L, 5 x 500 mL, 9 x 250 mL or 16 x 125 mL

#### LSE Orbital Shaker Ordering Information

Cat. No.	Description	Voltage	Plug Type	Speed (rpm)	Weight (kg)	Dimensions (cm)	Qty/Cs
6780-NP	LSE Orbital Shaker	120V, 50/60Hz	US	20-300	7.3	25.6 x 31.8 x 12.7	1
6781-NP	LSE Orbital Shaker	230V, 50/60Hz	EU	20-300	7.3	25.6 x 31.8 x 12.7	1
6782-NP	LSE Orbital Shaker	230V, 50/60Hz	UK	20-300	7.3	25.6 x 31.8 x 12.7	1

#### Accessories

480108	Flat Platform with Rubber Mat						1
480109	Flask Clamp Platform (without clamps)						1
480110	Clamp for 25 mL flask						1
480111	Clamp for 50 mL flask						1
480112	Clamp for 125 mL flask						1
480113	Clamp for 250 mL flask						1
480114	Clamp for 500 mL flask						1
480115	Clamp for 1L flask						1
431405	Erlenmeyer flask, baffled, 125 mL, vent cap, sterile						50
431407	Erlenmeyer flask, baffled, 250 mL, vent cap, sterile						50
431401	Erlenmeyer flask, baffled, 500 mL, vent cap, sterile						25
431403	Erlenmeyer flask, baffled, 1L, vent cap, sterile						25



Orbital Shaker with options clamps and flasks



Polycarbonate Erlenmeyer Flasks, Baffled

For a full listing of Corning flasks, please visit [www.corning.com/lifesciences](http://www.corning.com/lifesciences).





Mini Microcentrifuge

### Corning® LSE Mini Microcentrifuge

Corning's LSE Mini Microcentrifuge is a personal benchtop instrument designed for quick spin downs of micro-samples. Operation is simple and convenient; after loading sample tubes, close the lid and the rotor accelerates quickly to 6000 rpm (2000 x g). This speed range is ideal for bringing small droplets to the bottom of the tubes, for micro-filtrations, or basic separations. Press the lid release button and rotor comes to a stop.

The LSE Mini Microcentrifuge includes an 8-place rotor that will accept standard 1.5 mL to 2.0 mL microcentrifuge tubes, and adapters are included for 0.5/0.4 mL and 0.2 mL tubes. Also included is a 4-place rotor for PCR strip tubes.

- ▶ Compact, lightweight and easy-to-use
- ▶ Close the lid to start, press the lid release button to stop
- ▶ 8 x 1.5/2.0 mL rotor and 4-place strip tube rotors included
- ▶ Fixed speed of 6000 rpm generates 2000 x g

#### LSE Mini Microcentrifuge Ordering Information

Cat. No.	Description	Voltage	Plug Type	Qty/Cs
6765	LSE Mini Microcentrifuge	120V	US	1
6766	LSE Mini Microcentrifuge	230V	EU	1
6767	LSE Mini Microcentrifuge	230V	UK	1



High Speed Microcentrifuge

### Corning LSE High Speed Microcentrifuge

The Corning LSE High Speed Microcentrifuge features an easy-to-use, digital control interface and high-speed performance for quick nucleic acid and protein separations. Two control knobs are used to precisely set rotor speed and run time, and parameters are shown on the easy-to-read LED displays. Press the "Speed/G-Force" knob to toggle the display between rpm and calculated g-force.

The LSE High Speed Microcentrifuge incorporates a brushless drive and unique air cooling system to both reduce noise and minimize sample heating even during prolonged runs at maximum speed.

- ▶ Fast acceleration to a maximum speed 13,300 rpm/16,300 x g
- ▶ Complete with easy access, 24 x 1.5/2.0 mL rotor
- ▶ Precise, digital control system
- ▶ Set and view rotor speed in rpm or g-force
- ▶ Quiet and cool running, even at maximum speed

#### LSE High Speed Microcentrifuge Ordering Information

Cat. No.	Description	Voltage	Plug Type	Speed (rpm)	Weight (kg)	Dimensions (cm)	Qty/Cs
6765-HS	LSE High Speed Microcentrifuge	120V, 50/60Hz	US	500-13,300	8.1	23.5 x 29.3 x 21.6	1
6766-HS	LSE High Speed Microcentrifuge	230V, 50/60Hz	EU	500-13,300	8.1	23.5 x 29.3 x 21.6	1
6767-HS	LSE High Speed Microcentrifuge	230V, 50/60Hz	UK	500-13,300	8.1	23.5 x 29.3 x 21.6	1
6768-HS	LSE High Speed Microcentrifuge	100V, 50/60Hz	JP	500-13,300	8.1	23.5 x 29.3 x 21.6	1

## Corning® LSE™ Compact Centrifuge



The Corning LSE Compact Centrifuge is a space saving centrifuge ideal for use in life science and industrial research labs. Three angle rotors are available for use with the Corning LSE Compact Centrifuge. The 15 mL rotor has a capacity for 12 tubes while the 50 mL rotor holds 6. Both rotors accept round and conical bottom tubes and include removable, autoclavable tube sleeves. The third angle rotor accepts 18 x 1.5/2.0 mL microcentrifuge tubes. In addition the LSE Compact Centrifuge will also accommodate a swing-out rotor for 6 x 5 mL. Optional adapters accommodate various tube sizes including standard conical tubes and round bottom blood tubes.

The LSE Compact Centrifuge has a maximum g-force of 4,185 x g. Other features include an electronic lid lock system, over speed protection, and an automatic shut off imbalance detection system. The Corning LSE Compact centrifuge is cold room compatible.

- ▶ Capacity of 12 x 15 mL or 6 x 50 mL rotor
- ▶ Maximum speed 6,000 rpm/4,185 x g
- ▶ Accepts both conical and round bottom tubes
- ▶ Space saving footprint

Cat. No.	Description	Voltage	Plug Type	Speed (RPM)	Weight (kg)	Dimensions (cm)	Qty/Cs
6755	Corning LSE Compact Centrifuge	120V	US	200 - 6,000	15	28 x 37 x 26	1
6756	Corning LSE Compact Centrifuge	100V	US	200 - 6,000	15	28 x 37 x 26	1
6758	Corning LSE Compact Centrifuge	230V	UK	200 - 6,000	15	28 x 37 x 26	1
6759	Corning LSE Compact Centrifuge	230V	EU	200 - 6,000	15	28 x 37 x 26	1

### Rotors

Cat. No.	Description	Max RPM	Max RCF	Qty/Cs
480136	Corning LSE 6 x 50 mL Fixed Angle Rotor	6,000	3,820	1
480137	Corning LSE 12 x 15 mL Fixed Angle Rotor	6,000	4,180	1
480138	Corning LSE 6 x 5 mL Swing-Out Rotor	3,500	1,450	1
480139	Corning LSE 18 x 1.5 mL Fixed Angle Rotor	6,000	2,930	1
480143	Corning LSE 15 mL and 50 mL Combination Rotor	6,000	3,820	1

### Adapters

Cat. No.	Description	Qty/Pk	Qty/Cs
480140	Corning LSE Adapters for 10/15 mL Tubes in 50 mL Rotor	6	1
480141	Corning LSE Adapters for 5/7 mL Tubes in 50 mL Rotor	6	1
480142	Corning LSE Adapters for 5/7/10 mL Tubes in 15 mL Rotor	6	1



**480136** 6 x 50 mL Fixed Angle Rotor



**480137** 12 x 15 mL Fixed Angle Rotor



**480138** 6 x 5 mL Swing-Out Rotor



**480139** 18 x 1.5 mL Fixed Angle Rotor



**480143** 15 x 50 mL Combination Rotor



Snap Cap Polypropylene  
Microcentrifuge Tubes

### Costar® Snap Cap Polypropylene Microcentrifuge Tubes

- ▶ Certified RNase-/DNase-free; maximum RCF of 17,000 x g
- ▶ Supplied nonsterile and are autoclavable
- ▶ Flat cap surface and frosted writing spot on tube for convenient labeling
- ▶ Positive seal design allows for repeated opening and closing
- ▶ Costar low binding microcentrifuge tubes feature a bonded polymer technology that reduces protein and nucleic acid binding, resulting in better sample recovery
- ▶ Also available with screw caps

#### Snap Cap Polypropylene Microcentrifuge Tubes Ordering Information

Cat. No.	Volume (mL)	Color	Qty/Pk	Qty/Cs
<b>Snap Cap Microcentrifuge Tubes</b>				
3209*	0.65	Rainbow*	200	1,000
3620	1.7	Natural	500	500
3622*	1.7	Rainbow*	100	500
3213	2.0	Natural	500	1,000

#### Low Binding Snap Cap Microcentrifuge Tubes

3207	1.7	Natural	250	250
------	-----	---------	-----	-----

\*Rainbow pack includes one bag each of blue, green, yellow, red, and orange tubes.

### Corning® LSE Digital Dry Bath Heater

A broad temperature range to 150°C makes Corning's LSE Digital Dry Bath Heaters useful for a variety of applications in molecular biology, histology, clinical, environmental and industrial laboratories. Two models are available; for one or two sample blocks, and a variety of blocks are available for different sample containers. Temperature is accurately controlled by a microprocessor and shown on a large 4-digit LED display.

- ▶ Microprocessor control with large digital display
- ▶ Temperature accuracy of  $\pm 0.3^\circ\text{C}$ , and uniformity of  $\pm 0.2^\circ\text{C}$
- ▶ Wide temperature set range from ambient +5 to 150°C
- ▶ Stainless steel block cavity for corrosion resistance

#### LSE Digital Dry Bath Heater Ordering Information

Cat. No.	Description	Block Capacity	Voltage	Plug	Weight (kg)	Dimensions (cm)	Qty/Cs
6785-SB	LSE Digital Dry Bath	Single	120V, 50/60Hz	US	2.2	20 x 26.5 x 8.3	1
6786-SB	LSE Digital Dry Bath	Single	230V, 50/60Hz	EU	2.2	20 x 26.5 x 8.3	1
6787-SB	LSE Digital Dry Bath	Single	230V, 50/60Hz	UK	2.2	20 x 26.5 x 8.3	1
6788-SB	LSE Digital Dry Bath	Single	100V, 50/60Hz	JP	2.2	20 x 26.5 x 8.3	1
6785-DB	LSE Digital Dry Bath	Double	120V, 50/60Hz	US	2.2	20 x 26.5 x 8.3	1
6786-DB	LSE Digital Dry Bath	Double	230V, 50/60Hz	EU	2.2	20 x 26.5 x 8.3	1
6787-DB	LSE Digital Dry Bath	Double	230V, 50/60Hz	UK	2.2	20 x 26.5 x 8.3	1
6788-DB	LSE Digital Dry Bath	Double	100V, 50/60Hz	JP	2.2	20 x 26.5 x 8.3	1

#### Accessories

480116	Single Block, 48 x 0.2 mL PCR tubes or 6 x 0.2 mL strips	1
480117	Single Block, 20 x 2.0 mL tubes	1
480118	Single Block, 24 x 0.5 mL tubes	1
480119	Single Block, 24 x 1.5 mL tubes	1
480120	Single Block, 35 x 6 mm tubes	1
480121	Single Block, 20 x 10 mm tubes	1
480122	Single Block, 20 x 12 mm tubes	1
480123	Single Block, 20 x 13 mm tubes	1
480124	Single Block, 12 x 15 mL centrifuge tubes	1



Single Block Digital Dry Bath  
Heater



Double Block Digital Dry Bath  
Heater





Digital Dry Bath Heater Accessories

**LSE Digital Dry Bath Heater Accessories Ordering Information (Continued)**

Cat. No.	Description	Qty/Cs
480125	Single Block, 12 x 16 mm tubes	1
480126	Single Block, 12 x 17 mm tubes	1
480127	Single Block, 6 x 20 mm tubes	1
480128	Single Block, 6 x 25 mm tubes	1
480129	Single Block, 5 x 50 mL centrifuge tubes (for single block unit only)	1
480130	Single Block, 96 well PCR plate, skirted or nonskirted	1
480131	Dual Block, 96 well multiple well plate or 4 slides (for dual block unit only)	1
480132	Dual Block, 96 well PCR plate, skirted or nonskirted (for dual block unit only)	1
480133	Dual Block, 384 well PCR plate (for dual block unit only)	1

## Corning Equipment



Corning PC-220 Hot Plate/Stirrer

**Corning PC-220 Hot Plate/Stirrer**

Hot plate/stirrer units come with Corning's exclusive Pyroceram® top and have a two-year warranty.

- ▶ Micro-chemistry size
- ▶ Hot top indicator light
- ▶ 10.2 x 12.7 cm glass ceramic top

**PC-220 Hot Plate/Stirrer Ordering Information**

Cat. No.	Model	Power	Stir Range (rpm)	Temperature	Weight (kg)	Dimensions (cm)
6795-220	PC-220	120V/60Hz/ 283W/2.4A	60-1100	25-550°C	2.3	11.2 x 14.7 x 18.5
6796-220	PC-220	230V/50Hz/ 288W/1.3A	60-1100	25-550°C	2.3	11.2 x 14.7 x 18.5
6797-220	PC-220	100V/60Hz/ 280W/2.8A	60-1100	25-550°C	2.3	11.2 x 14.7 x 18.5

Note: 230 volt 6796 hot plate/stirrer comes with UK plug.



Scholar 170 Hot Plate

**Scholar™ 170 Hot Plate**

An economically priced hot plate that has a white enameled steel top plate that provides heat transfer up to 360°C. Dual heat shields dissipate heat and keep the case cool to the touch.

- ▶ Compact 5" x 5" size saves on bench space
- ▶ UL/CUL approved, one-year warranty
- ▶ 12.7 x 12.7 cm top

**Scholar 170 Hot Plate Ordering Information**

Cat. No.	Model	Power	Temperature	Weight (kg)	Dimensions (cm)
6795-170	PC-170	120V/60Hz/ 250W/2.1A	25-360°C	1.3	10.2 x 12.7 x 12.7
6796-170	PC-170	230V/50Hz/ 250W/1.1A	25-360°C	1.3	10.2 x 12.7 x 12.7
6797-170	PC-170	100V/60Hz/ 250W/2.5A	25-360°C	1.3	10.2 x 12.7 x 12.7

Note: 230 volt 6796 hot plate comes with UK plug.

## Corning Digital Hot Plates, Stirrers, and Stirring Hot Plates

Corning digital hot plates, stirrers, and stirring hot plates are made with the same durability and quality Corning has been putting into Pyroceram® top products since 1964. All models include Pyroceram top and a two-year warranty.

- ▶ Twin display stirring hot plate shows both temperature and stirring speed on separate digital displays to ensure accuracy
- ▶ Temperature accuracy within  $\pm 2^{\circ}\text{C}$  and stirring speeds at  $\pm 5\%$  of the speed setting you choose
- ▶ Digital displays indicate when set temperature and stirring speeds are reached
- ▶ Safety indicators – power button and hot top indicators warn if unit is plugged in or is too hot to touch
- ▶ Angled front panel and large knobs minimize damage from spills
- ▶ PC-400D/410D/420D top plate size: 12.7 x 17.8 cm
- ▶ PC-600D/610D/620D top plate size: 25.4 x 25.4 cm



Model PC-400D shown



Model PC-410D shown



Model PC-420D shown

### Digital Hot Plate Ordering Information

Cat. No.	Model Number	Voltage	Temp. Range	Dimensions (cm)
6795-400D	PC-400D	120V/60Hz	5-550°C	10.8 x 19.7 x 28
6795-600D	PC-600D	120V/60Hz	5-550°C	11.75 x 19.7 x 39.1
6796-400D*	PC-400D	230V/50Hz	5-550°C	10.8 x 19.7 x 28
6796-600D*	PC-600D	230V/50Hz	5-550°C	11.75 x 19.7 x 39.1
6797-400D	PC-400D	100V/60Hz	5-550°C	10.8 x 19.7 x 28
6797-600D	PC-600D	100V/60Hz	5-550°C	11.75 x 19.7 x 39.1
6798-400D	PC-400D	230V/50Hz	5-550°C	10.8 x 19.7 x 28
6798-600D	PC-600D	230V/50Hz	5-550°C	11.75 x 19.7 x 39.1

### Digital Stirrers Ordering Information

Cat. No.	Model Number	Voltage	Stir Range	Dimensions (cm)
6795-410D	PC-410D	120V/60Hz	60-1150 rpm	10.8 x 19.7 x 28
6795-610D	PC-610D	120V/60Hz	60-1150 rpm	11.75 x 19.7 x 39.1
6796-410D*	PC-410D	230V/50Hz	60-1150 rpm	10.8 x 19.7 x 28
6796-610D*	PC-610D	230V/50Hz	60-1150 rpm	11.75 x 19.7 x 39.1
6797-410D	PC-410D	100V/60Hz	60-1150 rpm	10.8 x 19.7 x 28
6797-610D	PC-610D	100V/60Hz	60-1150 rpm	11.75 x 19.7 x 39.1
6798-410D	PC-410D	230V/50Hz	60-1150 rpm	10.8 x 19.7 x 28
6798-610D	PC-610D	230V/50Hz	60-1150 rpm	11.75 x 19.7 x 39.1

### Digital Stirring Hot Plate Ordering Information

Cat. No.	Model Number	Voltage*	Temperature/ Stir Range	Dimensions (cm)
6795-420D	PC-420D	120V/60Hz	5-550°C/60-1150 rpm	10.8 x 19.7 x 28
6795-420KIT†	PC-420D	120V/60Hz	5-550°C/60-1150 rpm	10.8 x 19.7 x 28
6795-620D	PC-620D	120V/60Hz	5-550°C/60-1150 rpm	11.75 x 19.7 x 39.1
6795-620KIT†	PC-620D	120V/60Hz	5-550°C/60-1150 rpm	11.75 x 19.7 x 39.1
6796-420D*	PC-420D	230V/50Hz	5-550°C/60-1150 rpm	10.8 x 19.7 x 28
6796-620D*	PC-620D	230V/50Hz	5-550°C/60-1150 rpm	11.75 x 19.7 x 39.1
6797-420D	PC-420D	100V/60Hz	5-550°C/60-1150 rpm	10.8 x 19.7 x 28
6797-620D	PC-620D	100V/60Hz	5-550°C/60-1150 rpm	11.75 x 19.7 x 39.1
6798-420D	PC-420D	230V/50Hz	5-550°C/60-1150 rpm	10.8 x 19.7 x 28
6798-620D	PC-620D	230V/50Hz	5-550°C/60-1150 rpm	11.75 x 19.7 x 39.1

†6795-420KIT and 6795-620KIT include the 120V stirring hot plate plus temperature controller, support rod and stir bar retriever.

\* C E



Hot Plate Accessories

### Temperature Controller and Accessories

When used with the digital hot plate or stirring hot plate, the external temperature controller ensures precision temperature accuracy of the liquid inside the vessel as opposed to the temperature of the hot plate top.

Cat. No.	Description	Used With Models
6795-PR*	External Temperature Probe for digital hot plates and stirring hot plates	PC-400D/420D/600D/620D
6795KIT	Accessory Kit (includes 6795PR - External temperature controller, 440129 - Support rods, 18," 6970SR - Stir bar retriever)	PC-400D/420D/600D/620D
440129	Stainless Steel Support Rod – two 9" (45.7 cm) rods, $\frac{5}{16}$ " diameter. Rods can be screwed together to 18"	All digital and PC-200/210/220/400/410/420
409831	Stainless Steel Support Rod – 24" (61.0 cm), $\frac{7}{16}$ " diameter	PC-600/610/620
400084	Stainless Steel Support Rod – 12" (30.5 cm), $\frac{5}{16}$ " diameter	All digital and PC-200/210/220/400/410/420
440140†	Boss Head Clamp for use with $\frac{5}{16}$ " support rod & holding rod	All hot plates with $\frac{5}{16}$ " or smaller support rod
440141	Stainless Steel Holding Rod	All hot plates

\*Temperature controllers are not available for use with stirrer only units.

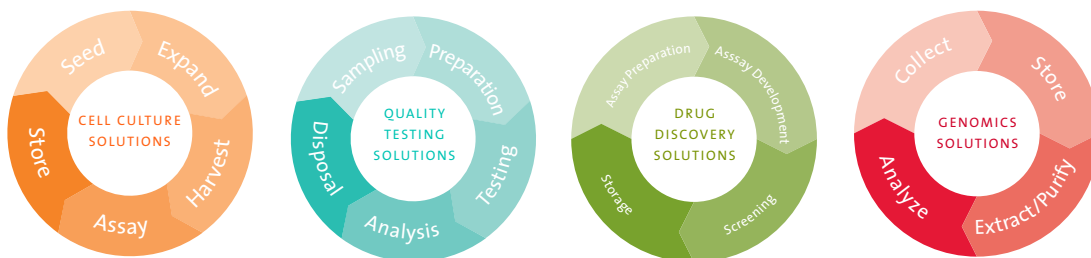
†Boss head clamps to support rod, holding rod connects to boss head. Temperature controller slides into holding rod.



## Beginning-to-end Solutions

At Corning, we continuously strive towards improving efficiencies and developing new products and technologies for life science researchers. We have scientists working in Corning R&D labs across the globe, doing what you do every day. Our technical experts understand your challenges and your increased need for high-quality products.

It is this expertise, plus a 160 year legacy of Corning innovation and manufacturing excellence, that puts us in a unique position to be able to offer a beginning-to-end portfolio of high-quality, reliable life sciences consumables.



For additional product or technical information, please visit [www.corning.com/lifesciences](http://www.corning.com/lifesciences) or call 1.800.492.1110. Customers outside the United States, please call +1.978.442.2200 or contact your local Corning sales office listed below.

# CORNING

## Corning Incorporated Life Sciences

Tower 2, 4th Floor  
900 Chelmsford St.  
Lowell, MA 01851  
t 800.492.1110  
t 978.442.2200  
f 978.442.2476

[www.corning.com/lifesciences](http://www.corning.com/lifesciences)

## Worldwide Support Offices

**ASIA/PACIFIC**  
**Australia/New Zealand**  
t 0402-794-347

**China**  
t 86 21 2215 2888  
f 86 21 6215 2988

**India**  
t 91 124 4604000  
f 91 124 4604099

**Japan**  
t 81 3-3586 1996  
f 81 3-3586 1291

**Korea**  
t 82 2-796-9500  
f 82 2-796-9300

**Singapore**  
t 65 6733-6511  
f 65 6861-2913

**Taiwan**  
t 886 2-2716-0338  
f 886 2-2516-7500

## EUROPE

**France**  
t 0800 916 882  
f 0800 918 636

**Germany**  
t 0800 101 1153  
f 0800 101 2427

**The Netherlands**  
t 31 20 655 79 28  
f 31 20 659 76 73

**United Kingdom**  
t 0800 376 8660  
f 0800 279 1117

**All Other European  
Countries**  
t 31 (0) 20 659 60 51  
f 31 (0) 20 659 76 73

**LATIN AMERICA**  
**Brasil**  
t (55-11) 3089-7419  
f (55-11) 3167-0700

**Mexico**  
t (52-81) 8158-8400  
f (52-81) 8313-8589