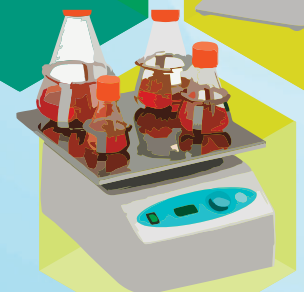
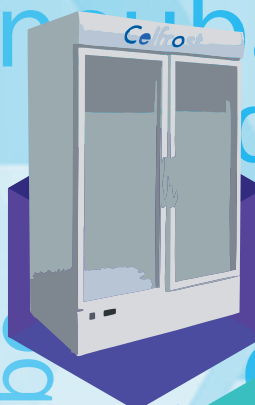
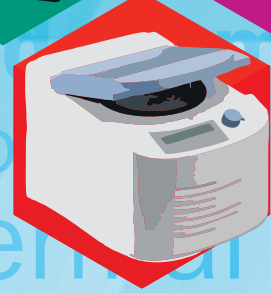
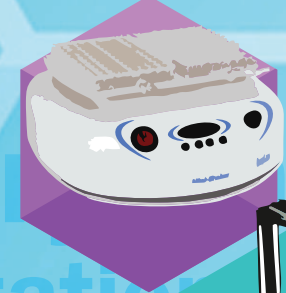
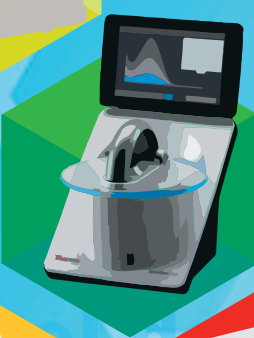
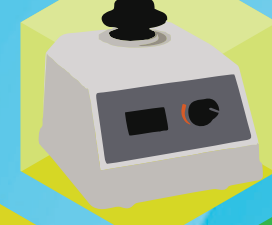


GINGER™
Making Science Lively



serological pipette

centrifuge tube

cryo

orb

micropipette

vortex mixer

incubator

disinfectant

biological safety cabinet

water bath

pipette controller

hot plate

ultra sonic

centrifuge

orbital

microcentrifuge

agarose

rotator

oven

micro centrifuge tube

agarose

pipette

serological

pipette

centrifuge

tube

agarose

micropipette

pipette

pipette controller

pipette

serological

pipette

centrifuge

tube

agarose

micropipette

pipette

centrifuge

tube

agarose

uv pcr

ultras

culture mask

pipette

centrifuge

tube

agarose

micropipette

pipette controller

pipette

serological

pipette

centrifuge

tube

agarose

micropipette

pipette

centrifuge

tube

agarose

micropipette

pipette controller

pipette

serological

pipette

centrifuge

tube

agarose

micropipette

pipette

centrifuge

tube

agarose

micropipette

Business Partners

CORNING
LSE™ Products

Labnet
Labnet International,

 **OMNI**
International
The Homogenizer Company*

grant 

bioSan

 **Milwaukee**

 **BINDER**
Best conditions for you success

ThermoFisher
SCIENTIFIC

 **Celfrost**®


MAESTROGEN

Lonza

CORNING

 **FALCON**®
A Corning Brand

AXYGEN®
A Corning Brand

Corning® Lambda™ EliteTouch™ Single-Channel, 8-Channel and 12-Channel Pipettors

- Ergonomic handle design is a perfect fit for both the right and left hand
- Convenient one-hand volume setting with auto-lock system prevents accidental volume change during work
- 4-digit counter provides greater precision and is perfectly positioned for visibility at all times
- Single-channel pipettors are compatible with very narrow tubes
- Fully autoclavable and UV-resistant for sample protection against contaminations
- The multi-channel shafts retract individually for perfect tip loading and easier tip ejection
- Unique ejector lever system enables effortless tip ejection
- Easy in-lab calibration helps you quickly adjust your pipettor to various liquid types
- Individually tested and supplied with a certificate of quality



Corning® Lambda™ EliteTouch™ Pipettors Single Channel

Cat. No.	Volume Range (µL)	Accuracy (%)	Precision (%)	Tip (µL)
6050	0.1 - 2	±40.0 to ±1.5	≤12.0 to ≤0.7	10
6051	0.5 - 10	±4.0 to ±1.0	≤2.8 to ≤0.4	10
6052	2 - 20	±3.5 to ±0.8	≤1.5 to ≤0.3	200
6053	5 - 50	±3.5 to ±0.8	≤1.3 to ≤0.3	200
6054	10 - 100	±3.0 to ±0.8	≤1.0 to ≤0.2	200
6055	20 - 200	±2.0 to ±0.6	≤0.7 to ≤0.2	200
6056	100 - 1000	±2.5 to ±0.6	≤0.6 to ≤0.2	1000

Corning® Lambda™ EliteTouch™ Pipettors Multi Channel

8-channel

6057	0.5 - 10	±10.0 to ±2.0	≤8.0 to ≤1.2	10
6058	5 - 50	±4.0 to ±1.6	≤2.5 to ≤0.6	200
6059	20 - 200	±3.0 to ±1.0	≤1.5 to ≤0.6	200
6060	30 - 300	±3.0 to ±1.0	≤1.5 to ≤0.6	300

12-channel

6061	0.5 - 10	±10.0 to ±2.0	≤8.0 to ≤1.2	10
6062	5 - 50	±4.0 to ±1.6	≤2.5 to ≤0.6	200
6063	20 - 200	±3.0 to ±1.0	≤1.5 to ≤0.6	200
6064	30 - 300	±3.0 to ±1.0	≤1.5 to ≤0.6	300

Corning Lambda EliteTouch Starter Kit

Cat. No.	Description
----------	-------------

- | | |
|------|--|
| 6065 | <p>Corning Lambda EliteTouch Starter Kit</p> <p>It Includes:</p> <p>4 single-channel pipettors:</p> <p>0.5 to 10 µL (Cat. No. 6051)</p> <p>2 to 20 µL (Cat. No. 6052),</p> <p>20 to 200 µL (Cat. No. 6055),</p> <p>100 to 1000 µL (Cat. No. 6056);</p> <p>universal linear stand for four single-channel pipettors (Cat. No. 6066); Corning DeckWorks pipet tips: 10 µL (Cat. No. 4135), 200 µL (Cat. No. 4138), 1000 µL (Cat. No. 4140); 3 colored pushbuttons (4 sets)</p> |
|------|--|



Corning® Lambda™ Plus Single-Channel, 8-Channel and 12-Channel Pipettors

- Highest levels of accuracy, reproducibility, and comfort.
- Smooth plunger movement and extremely low pipetting forces.
- Designed to maintain their calibration, after repeated use and autoclaving.
- Factory calibrated to strict ISO 8655 standards
- 3-year warranty
- Fully autoclavable and UV resistant
- Designed for universal fit with all common brands of pipet tips
- Adjustable tip ejector

Lambda Plus Single-Channel Pipettor

Cat No	Range (µL)	Accuracy	Precision	Tip (µL)
4070	0.2-2.0	±12 to ±1.5%	<6.0 to <0.7%	10
4071	0.5-10	±4.0 to ±0.5%	<4.0 to <0.4%	10
4072	2-20	±4.0 to ±0.8%	<3.0 to <0.4%	200
4073	10-100	±1.6 to ±0.8%	<0.8 to <0.3%	200
4074	20-200	±1.2 to ±0.6%	<0.6 to <0.3%	200
4075	100-1,000	±1.0 to ±0.6%	<0.45 to <0.25%	1,000

Lambda Plus 8-Channel and 12-Channel Pipettor

Cat No	Range (µL)	Channels	Accuracy	Precision	Tip (µL)
4080	1-10	8	±8.0 to ±2.0%	<6.0 to <1.2%	10
4081	5-50	8	±4.0 to ±1.6%	<2.5 to <0.6%	200
4082	20-200	8	±3.0 to ±1.0%	<1.5 to <0.6%	200
4083	50-300	8	±1.6 to ±1.0%	<1.5 to <0.6%	200/300
4084	1-10	12	±8.0 to ±2.0%	<6.0 to <1.2%	10
4085	5-50	12	±4.0 to ±1.6%	<2.5 to <0.6%	200
4086	20-200	12	±3.0 to ±1.0%	<1.5 to <0.6%	200
4087	50-300	12	±1.6 to ±1.0%	<1.5 to <0.6%	200/300

Corning® Lambda™ Plus Starter Kit

- ▶ Cat. No. 4071 Lambda Plus Single-Channel Pipettor, 0.5 to 10 pL
- ▶ Cat. No. 4072 Lambda Plus Single-Channel Pipettor, 2 to 20 pL
- ▶ Cat. No. 4074 Lambda Plus Single-Channel Pipettor, 20 to 200 pL
- ▶ Cat. No. 4075 Lambda Plus Single-Channel Pipettor, 100 to 1000 pL
- ▶ Cat. No. 4078 Universal Carousel Rack for six single-channel pipettors
- ▶ Corning DeckWorcs™ Pipet Tips: Cat. No. 4135 (10 pL), Cat. No. 4138 (200 pL), and Cat. No. 4140 (1000 pL)
- ▶ Free Gift: 1 Corning insulated lunch bag



Corning® Stripettor™ Ultra Pipet Controller

This light, ergonomic, motorized pipet controller is designed for use with glass and plastic serological pipets from 0.5 to 100 mL.

- Ergonomic, comfortable design
- Wall hanger, charging stand, charging power supply, and spare filters included
- Variable speed range and pressure sensitive control buttons
- Settings for blow out or slow “gravity” dispensing
- Compatible with pipets from 1 mL to 100 mL
- Includes hydrophobic, PTFE 0.2 µm filters
- Fast aspiration and dispensing speed at setting: 25 mL in 2.5 seconds Li-Io
- LCD display for continuous visualization of speed, modes, and battery status
- Colored nose pieces for user or application identification
- Well positioned function buttons



Cat No	Description
4099	Corning Stripettor Ultra Pipet Controller, with universal power supply, three 0.2 µm filters, 3 colored nose pieces and wall hanger

Corning® LSE™ Mini Micro centrifuge

Your personal bench top instrument designed for quick spin downs of micro-samples with simple and convenient operation.

- Compact, light weight and easy-to-use
- Close the lid to start, press the lid release button to stop
- 8 x 1.5/2.0mL rotor and 4-place strip tube rotors included
- Fixed speed of 6000 rpm

Cat No	Description
6770	Corning® LSE™ Mini Micro centrifuge.



Corning® LSE™ Vortex Mixer

The unit features a powerful, counter-balanced motor drive

- Continuous or “touch” mix modes
- Variable speed (0-2850 rpm) for gentle to vigorous mixing
- Cup head for all standard micro tubes and centrifuge tubes available
- Touch and continuous mix modes resistance

* Attachments will be ordered separately

Cat No	Description
6766	Corning® LSE™ Vortex Mixer with Standard Tube Head
480100	LSE Optional Head, 3, for Processing Larger Numbers of Tubes
480101	LSE Optional Head for 24 x 1.5/2.0 mL Tubes, 24 x 0.5 mL Tubes
480102	LSE Optional Head for 1 Microplate or 64 x 0.2 mL Tubes or 8 x 0.2 mL Tube Strips
480103	LSE Optional Head for 8 x 15 mL and 8 x 12/13 mm Diameter Tubes
480104	LSE Optional Head Attachment for 6 x 50 mL Tubes
480105	Optional Head for 12 x 1.5/2.0 mL Tubes, Head Horizontally
480106	LSE Optional Head for 4 x 15 mL Tubes, Held Horizontally
480107	LSE Optional Head for 2 x 50 mL Tubes, Held Horizontally



Corning® LSE™ Digital Stirrer , Hotplate and Stirring Hot Plate

- All models include Pyroceram top and a two-year warranty.
- Twin display shows both temp. and stirring speed (In case of Stirring Hot Plate)
- Temp. accuracy within $\pm 2^{\circ}\text{C}$ and stirring speeds at $\pm 5\%$ of the speed
- Angled front panel and large knobs minimize damage from spills
- Temp range 5-550°C, speed range 60-1150 rpm

Cat No	Description
6798-400D	Corning® 5 x 7 Inch Top PC-400D Hot Plate with Digital Display
6798-600D	Corning® 10 x 10 Inch Top PC-600D Hot Plate with Digital Display
6798-410D	Corning® 5 x 7 Inch Top PC-410D Stirrer with Digital Display
6798-610D	Corning® 10 x 10 Inch Top PC-610D Stirrer with Digital Display
6798-420D	Corning® 5 x 7 Inch Top PC-420D Stirring Hot Plate with Digital Display
6798-620D	Corning® 10 x 10 Inch Top PC-620D Stirring Hot Plate with Digital Display



Corning® Cell Counter

The Corning Cell Counter can perform a single cell count in less than three seconds*. This is much faster than most automated cell-counting systems.

The Corning Cell Counter, utilizing the CytoSMART™ Cloud App, can process the images in the Microsoft Azure Cloud Computing Platform. This cloud computing ability means that it can analyze the images faster than any existing onboard processor can.

The Corning Cell Counter uses a sophisticated Deep Neural Network for cell detection. When Trypan Blue is added the system can also detect cell viability. The Corning Cell Counter can detect clusters of cells, which leads to accurate cell counts of “highly concentrated samples” (up to 1×10^7 cells/mL)

SPECIFICATIONS

Counting range	5×10^4 to 1.0×10^7 cells/mL
Counting range	10 to 70 μm
Measurement time	<3 sec.*
Compatibility	Reusable and disposable counting chambers
Sample volume	10 μL
Weight	1.0 kg
Field of view	2.0 x 1.5 mm
Magnification	200X
Image resolution	2048 x 1536
Exported formats	PNG
Light source	LED
Camera	5 MP CMOS



Cat No	Description
6749	Corning® Cell Counter
480200	Corning® Counting Chamber for Corning Cell

Corning® Gosselin™ S-Blender-1

The Corning Gosselin S-Blender-1 is a high performance blender for microbiological sample preparation. The blender, which is suitable for a range of sample dilutions between 80 and 400 mL, ensures quick and accurate blending of any sample including food, agricultural, chemical, and cosmetic.

- Easy to clean
- Removable stainless steel paddles
- Autoclavable paddles and door
- Integrated waste drawer
- Adjustable speed, time, and blending strength:
- Blending capacity: 80 to 400 mL bags
- Digital control, keypad, and LCD display
- Adjustable timer: 10 seconds to 210 seconds or continuous
- Adjustable speed (strokes/min.): slow (450), normal (550), and fast (650)



Ordering Information

Cat. No.	Description
S-Blender-1	Corning® Gosselin™ S-Blender-1
SM1-01	80 mL blender bag, 150 x 105
SM2-02	400 mL blender bag, 300 x 180
SM2-01	400 mL blender bag, 300 x 180
SM3-01	3500 mL blender bag, 510 x 380

Orbit™ 1000 Digital Shaker

- Four platforms for large dishes, bottles, trays and flasks
- Accurate, digital speed control
- Safe for cold room or incubator use
- Speed Range : 20 - 300 rpm
- Motion/orbit size : Circular, 19 mm



Cat No	Product Description
D2030-1000-230V	Orbit 1000 Digital Shaker with platform,230 V
D2030-1000-B-230V	Orbit 1000 Digital Shaker without platform,230 V

Labnet™ Digital Dry Bath

- Precise microprocessor control
- Broad temperature range from ambient +5° to 150°C
- Large digital display
- Easy user calibration
- Single, Dual and Four block models available
- Temp Increments : 0.1°C
- Temp Uniformity : ±0.2°C
- USB Interface and block lid included as standard



Cat No	Product Description
D1301-230V	Labnet Dry Bath, Single Block, 230V
D1302-230V	Labnet Dry Bath, Dual Block, 230V
D1304-230V	Labnet Dry Bath, Four Block, 230V

ProBlot™ 6/12 Hybridization Ovens

- Precise temperature control and stability for reproducible results
- Variable speed, rotisseries hold 35mm bottles and 50mL tubes
- Durable stainless steel interior
- Optional accessories include rocking platforms and different sized rotisseries
- Rotisserie speed : 4 to 20 rpm
- Temp Range : Ambient +5° to 80°C
- Temp Resolution : 0.1°C
- Temp Uniformity : 0.5°C



Cat No	Product Description
H0600A-230V	ProBlot 6 Hybridization Oven
H1200A-230V	ProBlot 12 Hybridization Oven

311DS Digital Shaking Incubator

- Exclusive SmartCheck temperature control system
- Broad temperature range to meet a wide variety of applications
- Gasketed door with large, integral viewing area
- Temp Range Ambient +5° to 80°C
- Temp Uniformity ±0.25°C
- Temp Accuracy ±0.1°C
- Shaker speed 20 - 300 rpm
- Timer 0-99 min or continuous
- Shaker orbit 19 mm



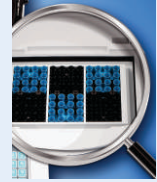
Cat No	Product Description
I5311-DS-230V	Shaking Incubator, Model 311DS,230V
I5231	Flat Platorm with non-slip rubber mat
I5330	Shaking platform pre-drilled for flask clamps, clamps sold separately

MultiGene™ OptiMax Thermal Cycle

The MultiGene OptiMax employs a new protocol optimization process improving on older gradient features. This “Better than Gradient” capability allows users to select up to 6 distinct annealing temperatures to be run simultaneously. This is ideal for method optimization as well as applications like genotyping.

The OptiMax utilizes FlexTemp™ technology that effectively separates the 96 well plate into 6 – (4 x 4) temperature regions that allow you to pick the temperatures you want to test against. These regions are easily identified by the blue and black squares visible on the microplate platen. Instead of having the thermal cycler choose temperatures for you, you can choose any temperatures you want within a 24°C range.

- Unique Flexible Programming with FlexTemp™ technology
- Fast ramp rates 5°C heating / 3.5°C cooling
- Simple user interface
- No condensation after overnight cooling at 4°C
- 3 Year Warranty
- Sample Capacity 1 x 96 well plate, 12 x 8 x 0.2mL strip tubes, 96 x 0.2mL tubes
- Programmable Temperature Range 4°C to 99.9°C
- Temperature Control Calculated or block
- Temperature Accuracy/Uniformity ±0.5°C/±0.5°C
- Heating/cooling method Peltier
- Dimension (W X D X H) 24 x 42 x 25 cm



Cat No	Product Description
TC9610-230V	MultiGene OptiMax Thermal Cycler

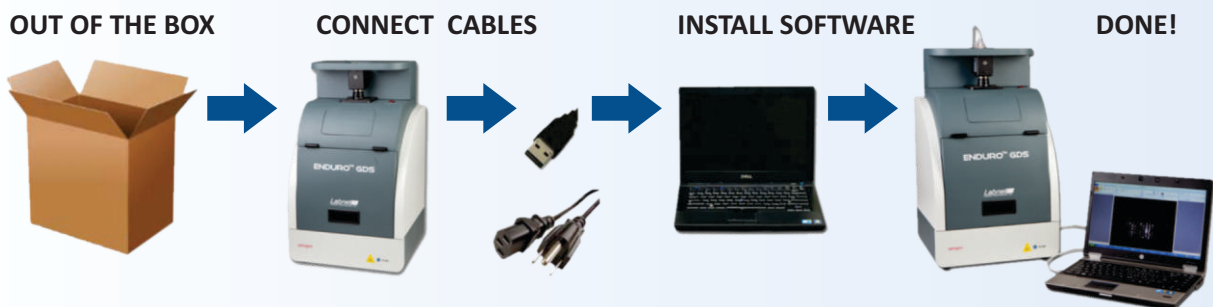
ENDURO™ GDS Gel Documentation System

This state-of-the-art imaging system provides an incredible combination of performance and value. It is a perfect fit with the rapidly expanding ENDURO™ Electrophoresis and Labnet Molecular Biology.

- Exceptional Resolution – 5MP Scientific Camera
- Ready to Use – Ready to connect to PC out of the box
- Innovative cabinet – Built in UV transilluminator, safety shut off switch and viewing port
- Large Field of view – 20cm x 24 cm viewing area
- The smartcapture technology utilized with this system so no focus needed – never have to touch camera
- AutoExposure – no manual manipulation of aperture or shutter speeds required.
- ENDURO™ GDS comes standard with a 2 year warranty exclusive of UV bulbs and gaskets.
- It comes with 1 positon filter
- Pull out UV tray for viewing and cutting bands without opening door



Cat No	Product Description
GDS-1302	Enduro GDS Imaging System-universal
GDST-1302	Enduro GDS Touch Imaging System
GDS - TL1D-1	Total Lab 1D 1 user License



MPS 1000TM Mini Plate Spinner

2,500 MAX RPM	500xg MAX RCF	2 PCR PLATES MAX CAP
-------------------------	-------------------------	--------------------------------

- A compact and economical centrifuge for PCR plates
- Quickly spin down droplets and condensation
- Use before and after thermal cycling to improve PCR yield
- Accepts skirted, non-skirted and all standard PCR plates
- Less than 1/4 the size of most plate centrifuges
- Vertically fixed rotor



Cat No	Product Description
C1000	MPS 1000 Mini Plate Spinner Centrifuge

SpectrafugeTM 6C Centrifuge

6,500 MAX RPM	4,000xg MAX RCF	6x10/15ml MAX CAP
-------------------------	---------------------------	-----------------------------

- High speed and g-force capabilities, produces PPP and RRP separation in two minutes
- Capable of centrifuging 15ml conical and all common blood draw tubes
- 15ml (17 x 120mm), 10ml (16 x 100mm), 7ml (13 x 100mm), 5ml (12 x 75mm)
- Speed control : Digital-Variable(100 rpm Inc.)
- Timer: 0.5-30 min.
- Rotor angle: 30°



Cat No	Product Description
C0060	Spectrafuge TM 6C Compact Centrifuge

SpectrafugeTM 24D Digital Microcentrifuge

13,300 MAX RPM	16,300xg MAX RCF	24x1.5/2.0 ml MAX CAP
--------------------------	----------------------------	---------------------------------

- Precise digital control
- Powerful, brushless drive
- Display RPM or g-force
- Exceptionally quiet and cool running
- Optional StripSpinTM adapter for 0.2ml tubes and strips



Cat No	Product Description
C2400	Spectrafuge TM 24D Digital microcentrifuge, standard gray
C2400-B	Spectrafuge TM 24D Digital microcentrifuge, Blue Accents

PRISM Air-cooled High-speed Microcentrifuge

15,000 MAX RPM	21,200xg MAX RCF	24x1.5/2.0 ml MAX CAP
--------------------------	----------------------------	---------------------------------

- Unique Multi-Flow air-cooling technology
- Includes easy access rotor with optional StripSpinTM adapter
- Quiet operation with easy to use control panel.
- Quick acceleration and deceleration time



Cat No	Product Description
C2500	Prism TM Microcentrifuge

PRISM R Refrigerated High-speed Microcentrifuge

13,500 MAX RPM	17,135xg MAX RCF	24x1.5/ 2.0 ml MAX CAP	-10 to 40° TEMP. RANGE
--------------------------	----------------------------	--------------------------------------	----------------------------------

- Powerful refrigerated system and Quick-cool to 4°C in 8 min.
- Includes easy access rotor (24x1.5ml) up to 17,135xg
- Exceptionally quiet and compact
- Optional StripSpin™ adapter for 0.2ml tubes and strips
- In case of significant imbalance detection system automatically shuts down operation
- Easy-to-read display shows all operating parameters at once



Cat No	Product Description
C2500-R	Prism R™ Refrigerated MicroCentrifuge

Bench Top Centrifuge C0226R

15,000 MAX RPM	21,382xg MAX RCF	6x15ml MAX CAP	-20 to 40° TEMP. RANGE
--------------------------	----------------------------	--------------------------	----------------------------------

- Centrifuge with cooling
- Initial cooling with/without centrifugation, cooling after centrifugation, precise temperature stabilization
- Maintenance free induction motor
- Dedicated button for fast cooling (to 4°C within max 6 minutes)
- Preselected and actual values of speed or RCF, time and temperature shown on the display at the same time
- Speed/RCF adjustment
- Automatic lid opening
- Rotor identification
- Lid locks when the rotor is running



Cat No	Product Description
C0226R	Refrigerated Universal Microcentrifuge

Bench Top Centrifuge C0336R

18,000 MAX RPM	24,270xg MAX RCF	8x50ml MAX CAP	-20° to 40° TEMP. RANGE	2° to 40° AMBIENT TEMP.
--------------------------	----------------------------	--------------------------	-----------------------------------	-----------------------------------

- Centrifuge with cooling option
- Effective ventilation system with maintenance-free induction motor
- Large graphical LCD display
- Programming of 10 segments acceleration and deceleration characteristics
- Rotor identification
- Continuous operation mode HOLD
- Automatic lid opening
- Password protection
- Programmable density setting for samples > 1.2 g / cm³ (with automatic maximum speed correction)

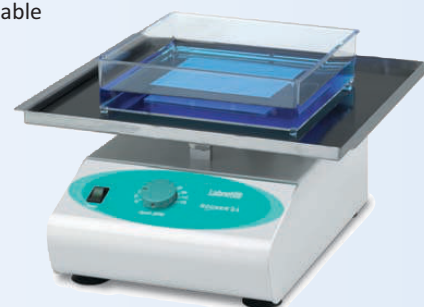


Cat No	Product Description
C0336	High Performance Centrifuge
C0336R	High Performance Centrifuge, Refrigerated

ProBlot™ Rocker

The Labnet ProBlot compact rockers is ideal for staining, hybridization and general mixing. Rocking speed is adjustable to provide the gentle motion required for staining fragile gels as well as the more vigorous action necessary for washing blots. The rocking movement is 7° to 20° adjustable. It can be used safely in temperature controlled environments up to 70°C. Their low profile and compact size make them perfect for use in incubators. For increasing the work area without sacrificing valuable bench space, double platform models can be purchased.

- Designed for staining, hybridization, washing, etc.
- Variable rocking speed
- Compact size, low profile
- Large, corrosion resistant stainless steel platforms
- Safe for coldroom or incubator use



Cat No	Product Description
S2025-B-230V*	ProBlot Rocker 25 with single platform (26 x 20 cm), 230V
S2025-D-230V*	ProBlot Rocker 25D with double platform (26 x 20 cm), 230V
S2025-XL-B-230V	ProBlot Rocker 25XL with large single platform (30x30 cm)
S2035-230V-EU	Model 35 Variable Speed Rocker with timer and single platform
S2035-D-230V-EU	Model 35 Variable Speed Rocker with timer and double platform

LABMAX™ Bottle Top Dispenser

The Labmax™ bottle top dispenser has been developed through extensive testing and input from end users. The result is an easy to use system with a variety of important features.

- Unique closed circuit air purging system
- Reagent "guard valve" for safety shut down
- Exclusive integrated swivel neck
- Patented direct displacement PTFE piston
- Quick and accurate volume adjustment
- Auto - calibrating
- Fully autoclavable
- ISO 9001 certified

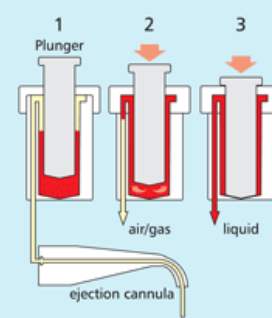


SPECIFICATIONS

Piston	Direct displacing, PTFE with PTFE coated viton O-ring
Cylinder	Borosilicate glass with transparent plastic safety coating
Housing	Polypropylene
Volume Adjustment	Locking rocker switch
Calibration	Automatic
Accuracy	± 0.7%
Reproductivity	± 0.1%
Autoclavable	Fully, to 121°C

Cat No	Product Description
D5370-10	Labmax Dispenser, 2.0 to 10 ml
D5370-100	Labmax Dispenser, 20 to 100 ml
D5370-10HF	Labmax Dispenser 2.0 to 10ml for hydrofluoric acid
D5370-2	Labmax Dispenser 0.3 to 2.5 ml
D5370-25	Labmax Dispenser 5.0 to 25 ml
D5370-25HF	Labmax Dispenser 5.0 to 25 ml for hydrofluoric acid
D5370-5	Labmax Dispenser 1.0 to 5.0 ml
D5370-50	Labmax Dispenser 10 to 50 ml

Air purging without changing mode of operation



ExcelTM Electronic Pipettes Single Chanel

The Excel is a multifunctional pipette that is fully motorized, eliminating hand strain and allowing efficient multi-dispensing. A high precision stepping motor controls piston action, resulting in exceptional accuracy and precision and minimal pipetting forces. Accuracy is further enhanced by a state-of-the-art microprocessor which controls the action of the stepping motor. The calibration of the unit is checked each time an operation is performed.

ExcelTM Electronic Pipettes Single Chanel

SPECIFICATIONS

Volume Range	Tip	Increments	Accuracy	Precision
0.5-10 µl	10 µl	0.1 µl	±4.0 to ±1.0%	≤2.5 to ≤0.4%
2-20 µl	10 µl*	0.1 µl	±4.0 to ±1.0%	≤2.0 to ≤0.4%
10-200 µl	200 µl	1.0 µl	±2.0 to ±0.6%	≤1.0 to ≤0.15%
100-1,200 µl	1,000/1,200 µl	1.0 µl	±1.5 to ±0.5%	≤0.6 to ≤0.15%

ExcelTM Electronic Pipettes Multi Chanel

SPECIFICATIONS

Volume Range	Tip	Increments	Accuracy	Precision
0.5-10 µl	10 µl	0.1 µl	±4.0 to ±1.5%	≤2.5 to ≤0.5%
2-20 µl	10 µl*	0.1 µl	±5.0 to ±1.0%	≤2.0 to ≤0.5%
10-200 µl	200 µl	1.0 µl	±3.0 to ±0.6%	≤1.0 to ≤0.15%
100-1,200 µl	1,000/1,200 µl	1.0 µl	±3.0 to ±0.5%	≤0.8 to ≤0.20%

*Most manufacturers' 10 µl tips will accurately accommodate 20 µl.



ENDUROTM Gel XL - A Complete Electrophoresis System

The compact design of ENDURO Gel XL results in a much smaller footprint than that of traditional gel boxes and power supplies. The 150V power supply connects directly into the gel box, eliminating tangled leads. Casting gels is quick and easy - place the gel tray in the stand, slide the comb into the slots and pour. Combs are multichannel compatible and gel trays are UV transparent.

SPECIFICATIONS

Output voltage/current	10V to 150V/10 - 400 mA
Timer	0 - 99 hr or continuous, audible alert
Overall Dimensions (W x D x H)	10 x 6.7 x 2.5 in./24.5 x 17 x 6.2 cm
Gel Capacity	1 large (12.5 x 12 cm), 2 small (12.5 x 6 cm), 4 micro (6 x 6 cm)
Program memory	Last programmed parameters saved
Electrical	Universal 100V- 240V, 50/60 Hz

CE

CSA Compliant



CAT NO.

DESCRIPTION

E0160* ENDURO Gel XL, with standard casting set (E0168), gel tank with safety lid and power supply

ENDURO™ Horizontal Gel Boxes

The ENDURO Horizontal Gel Boxes have been designed with safety and ease of use in mind. Constructed of quality materials, they stand up to everyday use and provide a long, trouble-free service life.

The gel boxes are molded from UV transparent acrylic, for leakproof performance. Cassettes enclose the electrodes to protect them from breakage and allow for easy cleaning and replacement.

Rubber casting gates fit easily onto the gel trays for tape-free gel casting. Positioning slots on the sides of the trays hold combs in place while pouring gels. The supplied combs are 1.5 mm thick and are adjustable to control well depth.

Each gel tray is supplied with a Wellcomb Mat that can be placed underneath to aid in visualizing wells when loading. The domed lid and drip ring prevent condensation from falling onto the gel.

The Enduro line includes a full range of sizes, from a compact mini system to a large system that accommodates as many as 450 samples. Additional gel trays and different sizes of combs are available as well as Enduro™ molecular weight markers. New are the Bicaster and Tricaster models that provide casting trays for multiple sized gels in a single package.



CE
CSA Compliant

SPECIFICATIONS	Enduro 7.7	Enduro 7.10	Enduro 10.10	Enduro 15.10	Enduro 15.15	Enduro 20.20
Gel (W x L cm)	7 x 7	7 x 10	10 x 10	15 x 10	15 x 15	20 x 20
Unit (W x L x H cm)	9 x 21 x 9	9 x 21 x 9	12.5 x 22 x 9	17.5 x 26.5 x 9	17.5 x 26.5 x 9	23 x 39.5 x 9
Buffer volume	225 mL	225 mL	300 mL	500 mL	500 mL	1,200 mL
Max sample capacity	32	64	100	140	210	450
Supplied combs	8 tooth (2)	8 tooth (3)	10* tooth (2)	16* tooth (1) 20 tooth (1)	16* tooth (1) 28* tooth (1) 20 tooth (1)	20 tooth* (2) 40 tooth* (2)

SPECIFICATIONS	Enduro 96	Enduro 7 BiCaster	Enduro 10 BiCaster	Enduro 15 TriCaster	Enduro 20 BiCaster
Gel (W x L cm)	10 x 12	7 x 10	15 x 10	15 x 15	20 x 20
Unit (W x L x H cm)	12.5 x 22 x 9	9 x 21 x 9	17.5 x 26.5 x 9	17.5 x 26.5 x 9	23 x 39.5 x 9
Buffer volume	300mL	225 mL	500 mL	500 mL	1,200 mL
Max sample capacity	96 plus	64	140	210	450
Supplied combs	96 well 1 mm	8 tooth (3)	16* tooth (1) 20 tooth (1)	16* tooth (1) 28* tooth (1)	20 tooth* (2) 40 tooth* (2)
Supplied Casting Trays		7 x 7, 7 x 10	10 x 7, 10 x 10	15 x 7 15 x 10 15 x 15	20 x 10 20 x 20

*Denotes multichannel compatible combs

CAT NO.	DESCRIPTION
E1007-7	ENDURO 7.7 Horizontal Gel Box
E1007-10	ENDURO 7.10 Horizontal Gel Box
E1010-10	ENDURO 10.10 Horizontal Gel Box
E1015-10	ENDURO 15.10 Horizontal Gel Box
E1015-15	ENDURO 15.15 Horizontal Gel Box
E1020-20	ENDURO 20.20 Horizontal Gel Box
E1010-9611	ENDURO 96
E1007-BI	ENDURO 7cm Horizontal Gel Box with 2 casting trays 7 X 7 & 7 X 10 cm
E1010-BI	ENDURO 10cm Horizontal Gel Box with 2 casting trays 7 X 10 & 10 X 10 cm
E1015-TRI	ENDURO 15cm Horizontal Gel Box with 3 casting trays 7 X 15, 10 X 15 & 15 X 15 cm
E1020-BI	ENDURO 20cm Horizontal Gel Box with 2 casting trays 20 X 10 & 20 X 20 cm

*Labnet offers a wide range of combs, spacers and other accessories for your electrophoresis needs.

ENDURO™ VE 10 Vertical Gel System

Labnet's ENDURO Modular Mini Vertical Gel System for protein electrophoresis is ideal for screening new samples and evaluating sample preparation conditions. It is a great research tool that can run a maximum of 4 gels within an hour. These gels can be either custom cast or pre-cast. The same system allows for either PAGE or Electroblotting to be carried out in the same tank by changing the insert.

SPECIFICATIONS

Number of gels (Handcast)	1-4
Precast gel comparability (Up to 2 gels/run)	Novex®, SERVAGel™, Thermo Precise Pierce Protein Gel, BIO-RAD Mini PROTEAN® Precast gels.
Glass Plate Dimensions (W x H x T)	10x10x0.2 cm
Gel Dimensions (W X H)	8 x 8.5 cm
Total buffer volume	Min 250mL Max 1200mL
Standard run time for SDS-Page	1-2 hours at from 90-225V
Unit Dimensions (W x H)	19 x 13 x 15 cm
Unit Weight	1.8Kg



CE
CSA Compliant

CAT NO.	DESCRIPTION
E2010-PA	ENDURO VE10 PAGE system, includes PAGE insert, buffer tank with leads and cooling pack
E2010-PBA	ENDURO VE 10 PAGE system with Electroblotting Insert . (E2010-BM + E2010-PA)
E2010-PCA	ENDURO PAGE casting system
E2010-BM	ENDURO VE10 Electro blotting Module for use with VE10 vertical gel system, includes 4 cassettes and 8 iber pads

ENDURO™ VE 20 Vertical Gel System

The ENDURO VE20 is Labnet's new large format vertical gel electrophoresis system. Designed to perform a variety of separations, including first and second-dimension SDS-PAGE, native, preparative, gradient, high-resolution nucleic acid electrophoresis and electroblotting, the VE20 is one of the most versatile large format vertical systems available.

SPECIFICATIONS

Plate dimensions: (W x H x D)	20 x 20 x 0.4 cm
Standard spacer dimensions: (W x H)	2 x 20 cm
IPG spacer dimensions: (W x H)	0.6 x 20 cm
Unit dimensions: (W x H x D)	30 x 27 x 18 cm
Unit height	5.5 lbs/ 2.5 kg
Number of gels	1-4
Total volume inner buffer chamber	640 mL
Total buffer volume for 2 gels	5.3 L
Total buffer volume for 4 gels	4.8 L
Standard run time without cooling	4-5 hours
Standard run time with cooling	3-4 hours



CE
CSA Compliant

CAT NO.	DESCRIPTION
E2020	ENDURO VE20 Vertical Gel System includes glass plates, 2 x 24 well combs, cooling coil and casting base
E2020-CU	ENDURO VE20 Dual Casting System 2 sets of glass plates, 1 mm thick bonded spacers, 2 x 24 well 1 mm thick combs, cooling coil, dummy plate and caster with external

ENDURO™ VE 10 Blotter

This ENDURO VE 10 blotter has a 4 mini gel (10 x 10 cm) capacity and can be purchased either as a stand-alone tank blotter or part of an integrated mini-gel/blotting system utilizing one shared tank.

This electroblotting system includes tank, blotting inserts and 4 cassettes with Fiber pads.

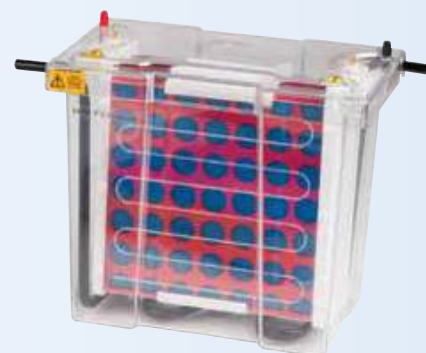


CAT NO.	DESCRIPTION
E2010-BT	ENDURO Electroblotting System, includes tank, blotting insert & 4 cassettes
E2010-BM	Mini Vertical Electroblotting Module for use with mini vertical gel system, includes 4 cassettes and 8 fiber pads
E2010-PMA*	Mini Vertical PAGE module for use with mini vertical gel system.
E2110-B-MC	Blotting Cassette
E2110-B-FP	Fiber Blotting Pads, pack of 8 pads
E2110-CP	Mini Cooling Pack for use with mini vertical gel system

*Glass plates, combs & caster not included.

ENDURO™ VE 20 Blotter

The ENDURO VE20 blotter has a large capacity that can hold up to 16 mini-gels or 4 large format gels. The VE20 electroblotting system provides all necessary components for performing transfers from vertical slab gels. It comes with tank, lid, platinum wire electrodes, 4 cassettes, 18 fiber pads and cooling coil. It has interchangeable modular inserts that can combine with VE20 vertical PAGE to use the same universal tank and lid. Complete flexibility is provided as the VE20 can be run with most power settings required. It can perform overnight transfers at voltages as low as 35V and rapid, high-intensity transfers up to 200V in 1-2 hours.



The VE20 comes standard with platinum wire electrodes 8 cm apart for increased capacity. A high intensity insert with plate electrodes 4 cm apart for rapid transfers is also available, E2020-HITB. The detachable cooling coil, which connects to the laboratory water supply or a recirculating chiller, prevents buffer depletion to allow overnight transfers and fast high-intensity blots. It also maintains the low temperatures important for protein stability during native transfers. The open design and rigid cassettes maximize current transfer and eliminate 'shadow band' formation. Color-coded cassettes prevent polarity reversal ensuring proper blotting. This is a well thought out high capacity tank blotter and a great value.

CAT NO.	DESCRIPTION
E2020-TB	ENDURO VE20 Blotting System, system Including tank and lid, 4 cassettes, 18 fibre pads, cooling coil
E2020-TBI	ENDURO VE20 Maxi Platinum Wire Blotting Inset, 4x compression cassettes and 18x fibre pads
E2120-TBC	ENDURO VE20 Blot Maxi Cassette
E2120-TBFP	Fibre pads - pk of 6
E2020-HITB	ENDURO VE20 HS Blotting System, High Intensity System including tank and lid, 1 cassettes, 6 fiber pads, cooling coil
E2120-HITBI	ENDURO VE20 HS Blotting System High intensity insert - includes 1 cassette and 6 fibre pads
E2120-CC	ENDURO VE20 Detachable Cooling Coil
E2120-LD	VE20 lid (No cables)
E2120-T	VE20 Tank

ENDURO™ Power Supplies

The ENDURO power supplies meet a wide range of applications for DNA, RNA and protein electrophoresis as well as blotting. Designed with safety in mind, they are loaded with features that today's applications demand. 3 models are available to meet your needs. Operating modes depending on model include constant voltage, current or wattage all with automatic crossover.

Operational parameters are easy to set using the membrane keypad and are displayed digitally on the large backlit LCD. The large display is visible from across the laboratory. The Model 250V allows 10 steps per program. Four sets of color coded output terminals allow multiple gels to be run simultaneously except in the Mini which allows 2 sets of gels at once. In the event of a power failure, the ENDURO units have an automatic recovery feature to maintain the previous settings.

The Mini 300V Power supply has an optional Power Stack. This combination rack and power source allows you to ergonomically stack 3 units only using one plug on the lab bench while providing optimal air flow around power supplies.

CE
CSA Compliant



SPECIFICATIONS	Model 300V	Model 250V
Output voltage/range/increments	2-300V/1V	5-250-V/1V
Output current range/increments	4-500mA/1mA	10-3,000mA/10mA
Output power range/increments	90W max/na	1-300W/1W
Timer	1 min – 999 min. or continuous	1 min – 999 min. or continuous
Programmable	No	Yes, 10 steps/program, 20 program memory
Dimensions	19 x 25 x 8 cm	19 x 25 x 8 cm
Weight	4.8 lbs/2.2 kg	5.5 lbs/2.5 kg
Input voltage	120-230V	120V-230
SPECIFICATIONS	Model Mini 300V	
Output voltage/range/increments	10-300V/1V	
Output current range/increments	10-400mA/1mA	
Output power range/increments	60W	
Timer	1 min - 99 hr 59 min or continuous	
Programmable	No	
Dimensions	15.6 x 21.2 x 8.4 cm	
Weight	2.5 lbs/1.141 kg	
Input voltage	100-240V	

CAT NO.	DESCRIPTION
E0303* - 230 V	ENDURO Model 300V
E0203* - 230 V	ENDURO Model 250V
E0304* - 230 V	ENDURO Model Mini 300V
E0304-R	ENDURO PowerStack
E0304-BUN* - 230 V	ENDURO mini power supply and powerstack bundle, includes two mini power supplies

Tissue Master 125 Homogenizer

The economically priced Tissue Master 125 is well suited for customers who homogenize with little variation in sample size. The Omni Tissue Master Package includes three stainless steel generator probes that can handle a wide variety of sample types, making it a great choice for laboratories with many applications and a limited budget.

- Power Rating:125 watt
- Speed Control:Variable from 5,000-35,000rpm
- Weight (inc. probe):535g (18.8oz)
- Sound Level:< 72 db.

Cat No	Product Description
TM125-220-05	220 volt Omni TM 125 with 5 x 58mm Flat Bottom Probe
TM125-220	220 volt Omni TM 125 with 7 x 85mm Flat Bottom Probe
TM125-220-10	220 volt Omni TM 125 with 10 x 85mm Flat Bottom Probe



Omni TH Tissue Homogenizer

The Omni TH is a powerful Tissue Homogenizer designed to handle a wide range of laboratory samples from 0.2 mL to 100 mL in volume. The TH can usually process a tissue sample in less than 30 seconds and is compatible with a wide variety of generator probes for flexibility in application requirements.

- Processing range with stainless steel probes:<200µL to 100mL
- Processing range with Omni Tip plastic probes:0.25mL to 30mL
- Power Rating:125 watt
- Speed Control:Variable from 5,000-35,000rpm
- Weight:466g (16.4oz)
- Sound Level:< 72 db.

Cat No	Product Description
TH220	220 volt Omni Tissue Homogenizer
THP220	Complete Tissue Homogenizer Package 220



Omni THQ - Digital Tissue Homogenizer

It is a digital tissue homogenizer with lightweight, hand-held design. It includes an integrated digital speed display that ensures consistent results for a variety of laboratory applications. The THQ features our new Whisper Drive Technology™ – a brushless motor that is ultra-quiet during operation and virtually maintenance-free. Unlike brush motors, Whisper Drive Technology guarantees accuracy and repeatability

- Processing Range:0.25 mL-100 mL (with Omni Tips)
- Power Rating:20 watts
- Speed Control:Variable from 8,000-32,000 rpm (increments of .5 or 500 rpm)
- Sound Level:< 65 db.

Cat No	Product Description
12-500	Omni THQ - Digital Tissue Homogenizer
B5-075	5X75 mL STAINLESS STEEL PROBE
B7-110ST	7X110 mL STAINLESS STEEL PROBE
B10-110ST	10X110 mL STAINLESS STEEL PROBE



OMNI GLH 850 General Laboratory Homogenizer

The GLH 850 is an adorable, high performance instrument capable of processing virtually any laboratory sample in seconds. A powerful 850 watt motor provides maximum versatility for homogenizing, dispersing or emulsifying the largest variety of sample types and sizes in its class. The GLH 850 features an advanced, integrated, push button digital control system that ensures accuracy and repeatability. It is compatible with a wide range of interchangeable stainless steel rotor stator generator probes (sold separately), from 5 mm to 30 mm diameter.

- Processing Range: 200 µL to 5 L
- Speed: Variable from 5,000 to 25,000 rpm
- Power Rating: 850 watt max
- Timer: 1 to 10 min

Cat No	Product Description
20-020	220 volt Omni General Lab Homogenizer 850 (motor only) *probes separately
20-010-P	Complete GLH 850 Package with 10, 20 and 30 mm generator probes



Omni Macro-ES Programmable Homogenizer

The Omni Macro-ES Programmable Homogenizer is a powerful 1800 watt programmable homogenizer that is compatible with a wide range of generator probes, blade assemblies and sealed containers to offer the perfect mix of dependability, versatility and power. The Omni Macro-ES is ideally suited for homogenizing, blending and creating emulsions

- Processing Range: 0.25 mL to 30 L
- Generator Probes: 7, 10, 20, 32, 45 and 55 mm
- Blade Assemblies: 1" and 2" in sealed chamber
- Digital display
- Store up to 12 programs including speed, run time and ramp functions
- Speed: Variable from 500 to 20,000 rpm

Cat No	Product Description
MES-220	220 volt Omni Macro-ES Homogenizer
MESP-220	220 volt Complete MES Package (Includes MES & 3 Generator Probes: 20x195mm Saw Tooth, 35x195mm Flat, 45x195mm Flat)



Omni Prep Multi-Sample Homogenizer

It supports simultaneous homogenization of up to six samples in a single process in sample tubes ranging from 1.5 mL to 50 mL. The Omni Prep microprocessor control allows the user to program both time and speed for processing up to 10 minutes at variable speeds up to 30,000 rpm. The oscillating sample rack mimics manual homogenization by transitioning the generator probes through the entire tube volume to ensure complete homogenization.

- Motor Power Rating: 150 watts
- Volume Range: 250 µL to 30 mL
- Generator Probes: 5 mm, 7 mm, 10 mm stainless or hybrid probes and 7 mm Omni Tip plastic probes
- Timer: 0 to 10 minutes
- Speed Control: 500 to 30,000rpm
- Sound Level: < 75 db.

Cat No	Product Description
06-021	Omni Prep Homogenizer
06-220	Oscillating Rack Sample Ranging 0.25 to 30mL



Bead Ruptor 4 MINI BEAD MILL HOMOGENIZER

The Omni Bead Ruptor 4 is the newest addition to the Omni line of Bead Ruptor bead mill homogenizers. Built upon the innovative design and unsurpassed quality of Omni's Bead Ruptor family, the Bead Ruptor 4 provides powerful performance in a compact design.

The Omni Bead Ruptor 4 is an ideal solution for releasing DNA, RNA, proteins and enzymes from very tough and small samples while still retaining molecular integrity. Designed for personal use

SPECIFICATIONS

- Broad performance range — gentle mixing to high force homogenization
- Small footprint — requires minimal bench space
- Holds 4 x 0.5 mL / 1.5 mL / 2 mL or 1 x 7 mL tubes
- Processing Range: 25 µL to 6 mL
- Run Time: 1 - 5 mins.
- Programs: 1
- Cycles: 1
- Performance Range: 30 g - 150 g

Cat No	Product Description
25-010	Omni Bead Ruptor 4



Bead Ruptor 12 Bead Mill Homogenizer

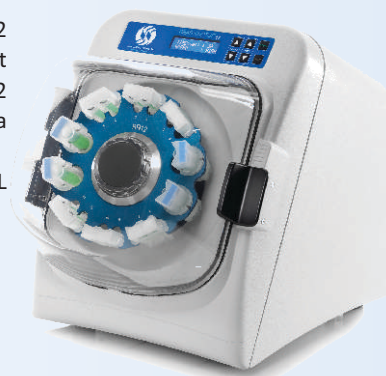
The Bead Ruptor 12 is the most powerful and economical bead mill homogenizer available today. It is an ideal solution for a variety of applications that require grinding, lysing, and homogenization of biological samples prior to molecular extraction.

Using disposable sample tubes pre-filled with a variety of lysing beads, the Bead Ruptor 12 vigorously and uniformly shakes up to 16 tubes at a time providing an efficient, consistent homogenization and high-yield. Unlike most other bead mill homogenizers, the Bead Ruptor 12 does not require a cool down period between runs. This means more samples can be processed in a smaller amount of time.

It includes Tube Carriage for 2 mL and 7 mL tubes Holds 12 x 2 mL or 0.5 mL tubes, and/or 4 x 7 mL tubes, Includes semi-permanent ring and assembly tools

SPECIFICATIONS

- Processing Range: 25 µL to 6 mL
- Run Time: 1 - 99 seconds
- Programs: 1
- Cycles: 1
- Performance Range: 3 m/s - 5 m/s in increments of 1 m/s



Cat No	Product Description
--------	---------------------

19-050	Omni Bead Ruptor 12
--------	---------------------

Bead Ruptor 24 ELITE

The Bead Ruptor 24 Elite is the most advanced and powerful bead mill homogenizer available. It is designed for grinding, lysing, and homogenizing biological samples prior to molecular extraction. Available with a wide range of accessories the Bead Ruptor 24 Elite enables processing of samples in volumes ranging from 0.5 mL to 50 mL. The optional Bead Ruptor Cryo Cooling Unit (19-8010) is designed to prevent the increase of sample temperature during the homogenization process.

SPECIFICATIONS

- Processing Range: 25 µL to
- Power Rating: 100-230 VAC/
- Run Time: 1s - 9:59 m
- Performance Range: 0.8 m/s - 8 m/s, increments of 0.15 m/s



Cat No	Product Description
--------	---------------------

19-040	Omni Bead Ruptor 24 Drive Unit
--------	--------------------------------

19-8005	Cryo24 Cooling Unit
---------	---------------------

Bead Ruptor 96 well plate homogenizer

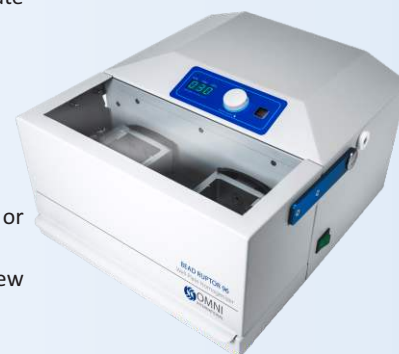
- Multiple sample processing modes including: sealed jar milling, cryogenic milling, well plate homogenizing, bead beating in sealed micro centrifuge or screw cap tubes.
- High throughput processing: Dissociate up to 384 samples per cycle.
- Digital controls ensure reproducibility.
- Large processing swath ensures high impact forces.
- 30 Hz frequency ensures rapid processing.
- Integrated safety lid.
- Wide range of accessories including well plate, tube holders and sealed jars for wet, dry or cryogenic milling.
- Compatibility: Cryogenic milling, well plate processing, bead milling in micro centrifuge and screw cap tubes.
- Processing Range: 25 µL to 50 mL
- Performance Range: 1 – 30 Hz with digital controls
- Run Time: 1s - 99 min. Most samples processing in under 1 min.

Accessories: Sealed stainless steel jars, SBS format well plate and micro centrifuge/screw cap tube holders

Cat No	Product Description
--------	---------------------

27-0002	Omni Bead Ruptor 96 230V
---------	--------------------------

19-010-330	96 Stripwell Tube Carriage
------------	----------------------------



Omni Sonic Ruptor 400 Ultrasonic Homogenizer

It offers precision engineering with all the features necessary to create a total system for ultrasonic disruption. The applications include nanoparticle dispersion, creating emulsions, cell disruption and homogenization.

- It is capable of creating an emulsion down to 1/100 of a micron.
- Variable power to 400 watts
- Process 250 µl to 1 L
- Automatic tuning for easy interchange of probe tips
- Pulse mode for samples to be processed while limiting temp.
- Integrated timer and adjustable power
- Wide range of accessories including sound abatement chambers and continuous flow chambers available



Cat No	Product Description
18-000-220	220V Omni Sonic Ruptor 400 Homogenizer, *Probes mentioned below
OR-A-01	Sound Abatement Chamber

Omni Sonic Ruptor 4000 Ultrasonic Homogenizer

The Omni Sonic Ruptor 4000 Ultrasonic Homogenizer offers precision engineering with all the features necessary to create a total system for ultrasonic disruption. It can disintegrate most cells, bacteria, spore or tissue. It can prepare an emulsion down to 1/100 of a micron, homogenize “immiscible” liquids, accelerate enzymatic and chemical reactions, stimulate bacterial activity, disperse solids in liquids and degas liquids. The Omni Sonic Ruptor 4000 includes an integrated Sound Abating Chamber to reduce cavitation sound emitted during processing.

SPECIFICATIONS

- Variable Power: 0 - 400 watts
- Timer: 0 - 15 minutes
- Automatic Tuning: Allows easy interchange of probe tips
- Pulse Mode Power: Allows sample to be processed at full power while limiting temperature rise. Essential for heat sensitive samples.
- Constant Power Mode: Selectable for non-heat critical sample applications.
- Temperature/Humidity Range: 0-40oC / 28% - 80%
- Power Consumption: 400 watts

Cat No	Product Description
OR-4000-220	220V Omni Sonic Ruptor 4000 Homogenizer
OR-F-01	Continuous Flow Chamber



Omni LH-96 Automated Homogenizer

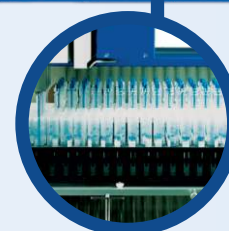
The unique Omni LH-96 Automated Homogenizer supports automated homogenization

Key Features

- Automated homogenization of up to ninety six samples
- Eliminates cross contamination and sample carry over
- Create custom sample processing profiles in the Prep 96 software
- Unique oscillating motion to ensure complete homogenization
- Process samples in common tube sizes such as 14 mL, 15 mL and 50 mL conical tubes.

Cat No	Product Description
LH96	Omni LH-96 Automated Homogenizer Workstation

Compatible with
HAMILTON
Star Liquid
Handling Workstations



General purpose digital water bath range – JB Nova range

- Ambient +5°C to 95°C
- Unique Set and Forget™ technology - fast heat up, reliable Temperature control
- Stability ±0.5°C
- Simple, intuitive controls - quick and easy to set Temperature
- Drain tap on 12L, 18L and 26L baths
- Practical front panel lock - disables front panel controls
- Preventing unintentional temperatures changes
- 3 year warranty
- A choice of four models with a base tray and lid included as standard.
- Heater mat and sensor bonded to underside of tank – optimized uniformity and work space.



Cat No	JBN5	JBN12	JBN18	JBN26
Volume	JBN5	JBN12	JBN18	JBN26

Advanced digital water bath range - SUB Aqua Pro range

- Ambient +5°C to 99°C operation
- Set and Forget™ technology - accurate temperature control
- Stability ±0.2°C
- Adjustable over temperature alarm
- Advanced dry start and run dry protection
- Suitable for use with heat transfer beads
- Choose from eight models with base tray and lid included as standard.
- Heater mat and sensor bonded to underside of tank – optimized uniformity and work space.



Cat No	SAP2	SAP2S	SAP5	SAP12	SAP18	SAP26	SAP34	SAPD
Volume	2L	2L	5L	12L	18L	26L	34L	5&12L
	(SHALLOW)							(DUAL)

Optima™ heating Circulators

The Grant Optima heating circulating range consists of 4 models - two general purpose: T100 and TC120 and two advanced models: TX150 and TXF200. Combine any of the four models with a Grant stainless steel or plastic tank or with a T-CLAMP to attach to virtually any vertical sided tank. A cost-effective range of multi-purpose systems combining Grants legendary quality and reliability.

Cat No	Product Description
T100	Heating circulator digital, general purpose 0°C* to 100°C
TC120	Heating circulator digital, general purpose -25°C* to 120°C, pump
TX150	Heating circulator digital, advanced, programmable -50°C* to 150°C, pump
TXF200	Heating circulator digital, advanced, programmable -50°C* to 200°C, pump



Optima™ heating baths and circulators

- Precise temperature control for a wide range of laboratory applications.
- Accurate and safe temperature control – for samples and users
- Intuitive programming and thoughtful design features
- Robust, durable construction – for longevity, reliability
- A complete - 32 models to cover basic through to sophisticated needs,
- Optima™ digital thermostat for precise temperature control
- Cooling/heating range -15°C to 200°C**
- Full colour screen
- Stability ±0.1°C, ±0.05°C
- Easy to use rotary dial and two function keys



GBRC1 Refrigerated circulating bath

The Grant Basix refrigerated circulating bath with digital thermostatic controller provides reliable cooling from -20°C to 100°C. The bath has a plugged drain pipe for easy emptying and a safety load switch with over temperature cut-out. A great value solution for applications such as sample preparation and calibration.

- Thermostatic controller can be assembled at 90° for alternative placement
- 5 litre tank with plugged drain pipe
- Easy to read 4 digit LED display
- Fluid level safety float switch
- Adjustable over temperature cut-out

Cat No	Product Description
GBRC-1	Grant Basix Refrigerated circulating bath with digital thermostatic controller



LT ecocool™ energy efficient refrigerated / heating circulating baths

A new range of innovative, eco-friendly, refrigerated heating circulating baths offering significant running cost savings while delivering powerful cooling. Consisting of three models, all products in the LT ecocool™ range are supplied assembled as ready to use kits, complete with accessory hosing*, clips and connectors as standard.

- Choice of three models, temperature range -30°C to 200°C
- Industry leading 4 year warranty with Grant renowned service and support, no registration required
- Active cooling through the whole temperature range
- True energy saving of up to 80% against standard compressor units

Cat No	Product Description
LT ECOCOOL 100	Energy efficient general purpose refrigerated heating circulating bath -20 to 100°C NEW
LT ECOCOOL 150	Energy efficient advance refrigerated heating circulating bath -25 to 150°C NEW



Optima™ refrigerated / heating baths and circulators

- Optima™ digital thermostat for precise temperature control
- R4 and R5 can be combined with any of our T100, TC120, TX150 or TXF200 heating circulators, offer a number of features:
- Cooling/heating range -50°C to 200°C
- Stability ±0.1°C, ±0.05°C
- Easy to use rotary dial and two function keys
- Flow rate: 16 to 22 LPM
- Volume – 12 L & 20 L
- LTC4 (TX150 + R4) kit available with tubing



Ultrasonic Bath-XUB range

- Frequency LEAP technology
- Heated ambient +5°C to 70°C
- Accurate process control of time, temperature, ultrasonic activity, degas and power
- Modern, sleek design with stainless steel basket, ABS
- Plastic lid, M2 cleaning solution and drain tap included as standard
- Degassing function to remove small bubbles from liquid
- Reducing the overall time needed for ultrasonic operation
- A choice of 7 sizes

Cat No	XUB5	XUB10	XUB12	XUB18	XUB25	XUBA1	XUBA3
Volume	4.5L	9.5L	12.5L	17.5L	25L	1.5L	2.5L
	(DIGITAL)				(ANALOG)		



Shaking water baths

World-renowned shaking water baths from Grant: high precision temperature control combined with a robust, high quality, patented orbital and linear shaking mechanism that works smoothly and consistently even in demanding applications.

- High quality, robust design with unique magnetically coupled shaking mechanism for maximum reliability, consistency and quiet operation
- Flexible choice of combined orbital / linear shaking or linear only shaking for all routine and demanding techniques
- Extensive range of accessories to provide the right solution for your application. Varied vessels types can be securely held using high quality, springs, clamps or racks



TECHNICAL SPECIFICATION	OLS26	LSB12	LSB18
Tank size	26L	12L	18L
Minimum working depth	70 mm		60 mm
Temperature range ambient	ambient +5 to 99°C. 0 to 99°C with accessory cooling		ambient +5 to 99°C
Uniformity (DIN 12876-3) @ 70°C	±0.1°C		±0.1°C
Stability (DIN 12876-3) @ 70°C	±0.1°C		±0.1°C
Display	2 x LED (individual displays and controls for temperature and shaking speed)		LED
Orbital and Linear shaking speed	20 to 200 rpm (depending on load)		20 to 200 rpm (depending on load)
Orbital shaking radius	9 mm		1 rpm
Shaking speed display resolution	1 rpm		20 mm
Linear shaking stroke length	18, 28, and 36 mm	240 x 235 mm	420 x 235 mm
Shaking tray area	380 x 235 mm		1 to 999 mins
Timer 1 to 999 mins	1 to 999 mins	0.8/0.8 kW	1.05/1.4 kW
Heater power 120V / 230V	1.05 / 1.4 kW	0.8/0.8 kW	1.05/1.4 kW
Drain tap	YES		YES
Safety	over temperature protection / low liquid level cut-out		over temperature protection / low liquid level cut-out
Supply voltage	110-120V or 220-230V		110-120V or 220-230V

MR-1 Mini-Rocker Shaker

SPECIFICATION

- Mixing frequency range 5–30 oscil/min
- Fixed tilt angle 7°
- Maximum continuous operation time 168h
- Direct drive mechanism Included
- Digital time setting 1 min–24 hrs / non-stop
- Non-slip silicone mat is supplied as standard Included
- Maximum load 1 kg
- Display LED



Cat. No.	Description
----------	-------------

BS-010152-AAG	MR-1 Incl.Standard Platform Bio PP-4S
---------------	---------------------------------------

Multi Bio RS-24, Programmable Rotator

SPECIFICATION

- Vertical rotation speed control range 1-100 rpm (increment 1 rpm)
- Vertical rotation movement overhead, 360°
- Vertical rotation time setting range 0 - 250 sec
- Reciprocal rotation speed control range 1–100 rpm (increment 1 rpm)

Cat. No.	Description
----------	-------------

BS-010117-AAG	Multi Bio RS-24 Incl.PRS-26
---------------	-----------------------------

BS-010117-HK	Platform PRS-5/12
--------------	-------------------

BS-010117-IK	Platform PRS-10
--------------	-----------------

BS-010117-LK	Platform PRSC-22
--------------	------------------



UVC/T-M-AR, DNA/RNA UV-cleaner box

DNA/RNA UV-cleaner box UVC/T-AR are designed for clean operations with DNA samples. UV-cleaner box provide protection against contamination.

Advantages of Biosan UV-Cleaner boxes:

- Ozone free high density UV decontamination
- Long living UV lamps (9,000 hours average)
- Automatic switch off of UV-lamps when the protective screen is opened
- Bactericidal flow-type recirculator providing permanent decontamination inside UV-cleaner box during operation
- Low noise, low energy consumption



Product	UVC/T-M-AR,DNA/RNA UV-cleaner box	UVC/T-AR,DNA/RNA UV-cleaner box	UVT-B-AR, DNA/RNA UV-cleaner box
Walls material	Rear: stainless steel Sides and front: glass (EUROGLASS, Germany)	Plexiglas: Polymethyl methacrylate ALTUGLAS EX	Rear: stainless steel, Sides: steel with chemical resistant powder coating Front: glass (EUROGLASS, Germany)
Working surface material	Stainless steel	Steel with chemical resistant powder coating	Stainless steel
Open UV-lamp	1 x 25W built-in bactericidal, TUV25WG13 UV-C		
UV radiation level	15 mW / cm ² / sec		
Radiation type	UV (λ = 253.7 nm), ozone-free		
Digital time setting of direct UV exposure	1 min–24 hrs / non–stop (increment 1 min)		
UV-recirculator	1x25W (efficiency >99% per 1 hour)		

BioMagPure 12

Compact Bench-Top Robotic Workstation For Automated Nucleic Acid Purification, with the flexibility of processing 1-12 samples per run, the BioMagPure 12 is tailor-made to fit small clinics and early stage laboratories.

FEATURES:

- Advanced magnetic bead technology
- Reaction chamber with patented parts
- Piercing-pin system for elimination of cross-contamination
- Walk-away automation
- Reliable quality
- No PC required
- Ready-to-use reagent cartridges
- 3 easy steps: LOAD-RUN-OBTAIN

SPECIFICATION

Processing time	30–50 min
Processing capability	1–12 samples per run
Extraction technology	magnetic particle separation technology
Protocol	programmed by scanning a barcode
Protocol input	barcode scanner
Sample volume	100–3000 µl (depending on the kit)
Elution volume	50–300 µl
Certification	CE IVD



Cat. No.	Description
BS-060201-AAA	BioMagPure 12 Compact Bench-Top Robotic Workstation For Automated Nucleic Acid Purification

*Extraction kit will be ordered separately.

RTS-1C, Personal bioreactor

Reverse-Spin® mixing principle in 50 ml falcon tubes allows to achieve high kLa (h-1) up to 450 which is essential for efficient aerobic cultivation

Individually controlled bioreactor accelerates optimization process

Possibility to cultivate microaerophilic and obligate anaerobic microorganisms (not strict anaerobic conditions)

Reverse-Spin® mixing principle enables non-invasive biomass measurement in real time

Near-infrared optical system makes it possible to register cell growth kinetics

Free of charge software for storage, demonstration and analysis of data in real time

Compact design with low profile and small footprint for personal application

Temperature control for bioprocess applications

Active cooling for rapid temperature control, e.g. for temperature fluctuation experiments

Task profiling for process automatization

Cloud data storage to remotely monitor the process of cultivation while at home or using a mobile phone



Cat. No.	Description
BS-010160-A04	RTS-1C including TubeSpin® Bioreactor 50, TPP®, 20 pcs.
BS-010158-A04	RTS-1 including TubeSpin® Bioreactor 50, TPP®, 20 pcs.
BS-010158-AK	TubeSpin® Bioreactor 50, TPP®, 20 pcs.
BS-010158-CK	TubeSpin® Bioreactor 50, TPP®, 180 pcs.
BS-010158-BK	USB 2.0 Hub 10 × ports

TS-100C, Thermo-Shaker

Thermo-Shaker TS-100C provides intensive mixing and temperature control of samples in microtest tubes or PCR plate. This model of Thermo-Shaker differs from TS-100 with a possibility of cooling samples down to +4°C.

The instrument is applicable in:

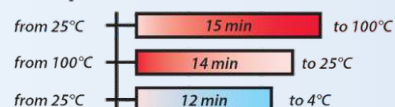
- Genetic analysis — in extraction of DNA, RNA and further sample preparation;
- Biochemical study of enzymatic reactions and processes;
- Extraction of metabolites from cellular material.

There are five heating and cooling blocks available, including a block with a plastic lid for the PCR-plates. All blocks are mutually interchangeable and can be easily installed on Thermo-Shaker.



Cat. No.	Description
BS-010143-AAI	TS-100C Thermo-shaker
BS-010143-AK	SC-18C Block
BS-010143-CK	SC-18/02C Block
BS-010143-EK	SC-24C Block
BS-010143-GK	SC-24NC Block
BS-010143-FK	SC-96AC Block

Heat up and cool down times for TS-100C

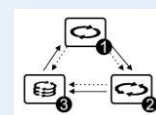


MM-1000, Overhead Stirrer

Overhead Stirrer Multi Mixer MM-1000 is designed for stirring liquids up to 20 litres. Quiet and reliable mixer that can provide stable continuous mixing up to 7 daynights. It can realize three types of motion:

- Rotational
- Reciprocal
- Vibration

The innovative combination of three motion types provides high level of homogeneity due to consecutive combination of laminar and turbulent flows that cause substances to dissolve faster. MM-1000 performs separate (mono-) (1; 2; 3), consecutive binary cycles (c) (1-2) × c; (1-3) × c and (2-3) × c and complex tri-cycles (1-2-3) × c.



Cat. No.	Description
BS-010306-AAH	MM-1000 without stirrers incl. external power supply unit
BS-010306-AK	MP-1 Paddle stirrer (70 x 70 mm)
BS-010306-BK	MP-2 Propeller stirrer 2 folded blades (ø 60mm)
BS-010306-CK	MP-3 Propeller stirrer 3 folded blades (ø 50mm)
BS-010306-DK	MA-1 Anchor stirrer (ø. 90 mm, height 48 mm)
BS-010306-EK	MC-1 Centrifugal stirrer (ø 60 mm)

FTA-2i, Aspirator

Aspirator with trap flask FTA-2i is designed for aspiration or removal of alcohol, buffer and liquid from reaction vessels.

SPECIFICATION

Aspiration speed	up to 10 l/min (air)
Vacuum	-200 to -800 mbar (adjustable)
Trap flask	2 l, polypropylene (autoclavable)
Liquid level sensor type	invasive
Overflow protection	motor stops, light and sound signal



Cat. No.	Description
BS-040120-A02	FTA-2i incl. power supply unit
BS-040118-PK	HAS-1, Hand operator set
BS-040108-BK	MA-8, 8-channel adapter manifold

Mi150 pH / Temperature Laboratory Bench Meter

Mi150 is an advanced pH/Temp microprocessor-based bench meter. This meter is provided with a series of new diagnostic features which add an entirely new dimension to the measurement of pH

- Automatic Temperature Compensation (ATC) for good accuracy under fluctuating temperatures
- Easy to read large custom LCD
- Easy and Quick Push-button Calibration
- 7 memorized buffers (pH 1.68, 4.01, 6.86, 7.01, 9.18, 10.01 and 12.45) for calibration

Cat. No.	Description
MI150	Mi150 pH / Temperature Laboratory Bench Meter
MA917B/1	Double junction refillable pH electrode
MA831R	Temperature Probe
MA9315	Electrode Holder
M10016	Sachet Electrode Cleaning Solution



Mi160 pH / ORP / ISE / Temperature Laboratory Bench Meter

This new pH/ORP/ISE/Temp bench meter is ideal for very accurate and precise measurements for all laboratory needs. It can perform ion-selective measurements directly in ppm, as well as pH, ORP and temperature measurements.

- 7 memorized buffers (pH 1.68, 4.01, 6.86, 7.01, 9.18, 10.01 and 12.45) for pH calibration
- pH calibration up to 3 points
- ISE calibration up to 2 points; six standard solutions available: 0.01, 0.1, 1, 10, 100, 1000 ppm
- Messages on the LCD to make the calibration easy and accurate
- Relative mV feature
- GLP feature, to view last calibration data for pH or ISE

Cat. No.	Description
MI160	Mi160 pH / ORP / ISE / Temperature Laboratory Bench Meter
MA917B/1	Double junction refillable pH electrode
MA831R	Temperature Probe



Mi170 Autoranging Conductivity / TDS / NaCl / Temperature Laboratory Bench Meter

Mi170 measures 4 different parameters - EC, TDS (Total Dissolved Solids), percentage of NaCl and temperature in a variety of ranges.

The auto-ranging feature for EC and TDS measurements automatically sets the resolution suitable to the tested sample. All measurements can be temperature compensated at 20 or 25°C and the compensation coefficient is selectable by the user.

The automatic temperature compensation can also be disabled for measuring the actual conductivity value.

Cat. No.	Description
MI170	Mi170 Autoranging Conductivity / TDS / NaCl / Temperature Laboratory Bench Meter
MA814DB/1	EC/TDS/NaCl/Temperature Probe
MA9315	Electrode Holder
Mi5200	Application Software
MA9350	RS232 connection cable with 2 meters cable



Mi180 pH / ORP / Conductivity / TDS / NaCl / Temperature Laboratory Bench Meter

Mi180 measures 6 different parameters: pH, ORP, EC, TDS (Total Dissolved Solids), percentage of NaCl and temperature in a variety of ranges.

pH calibration can be performed in 3 points selectable between 7 memorized buffers, to provide a very accurate calibration curve even when testing different samples, where very wide differences in pH can be found.

Cat. No.	Description
MI180	Mi180 pH / ORP / Conductivity / TDS / NaCl / Temperature Laboratory Bench Meter
M10016	Satched Electrode Cleaning Solution
MA9350	RS232 connection cable (2 meters)



C | CO₂ Incubators with Hot Air Sterilization

Every CO₂ incubator from BINDER guarantees optimum, reproducible growth conditions for cell cultures. The new silicone-jacket heating system and Permadyr technology eliminate the risk of condensation. With 180 °C hot air sterilization, bacteria and spores can be reliably killed as necessary.

The unique, seamless deep-drawn inner chamber without built-in obstructions makes cleaning very simple. Important advantages for uniformly good cell and tissue cultivation offered by BINDER Series C and CB CO₂ incubators.

Special features

- Seamless, deep-drawn inner stainless steel chamber
- Auto-sterilization with hot air at 180 °C
- CO₂ sensor with infrared technology
- Humidification system with condensation protection

Advantages at a glance



Intuitive touchscreen controller

State-of-the-art control technology with time-segment and real-time programming. Internal data logger, measured values can be read out in open format via USB.



Moisture management with quick recovery times

Advanced Permadyr™ moisture system with practical water pan allows for faster humidification when the door is opened.



DuoDoor™ door locking mechanism

Thanks to the new ergonomic door locking mechanism, the unit door and inner glass door can be opened at the same time.



Product	C170	CB60	CB170	CB220
Temperature Range	6° - 50°C	7° - 60°C	4° - 60°C	7° - 60°C
Humidity	95%	95%	90-95%	95% RH
Sterilization	Auto Sterilization with hot air at 180°C			
CO ₂ Sensor	CO ₂ Sensor with infrared technology	CO ₂ Sensor with infrared technology	CO ₂ Sensor with Single beam infrared technology	CO ₂ Sensor with infrared technology
Gas Mixing Jet	CO ₂ gas mixing jet with venturi effect			
Display	Display with 3digit 7 segment LEDs	Display via color LCD monitor	Display via color LCD monitor	Display via color LCD monitor
Door	Tightly sealed inner door made of toughened safety glass			
Shelves	3	2	3	3
Alarm contact	Zero voltage alarm watch			
Alarm	Trouble shooting system with visual & audible alarm			

UF V series Ultra low temperature freezers

The BINDER ultra low temperature freezer ensures the safe storage of samples at -90 °C. It combines outstanding environmental friendliness with low energy consumption, convenient operation and an individual safety concept.

Important characteristics

- Range of temperature controller: -90 °C to -40 °C
- Lowest energy consumption in its class
- Powerful cascade compressor cooling unit
- Environmentally friendly refrigerants R-290 and R-170
- Efficient thermal insulation with vacuum insulation panels
- Innovative door gasket concept reduces buildup of ice
- Ergonomic door handle
- Rust-proof interior made completely of stainless steel
- Detachable inner doors made of stainless steel
- 3 stainless-steel shelves providing flexible placement
- Water cooling (depending on version)
- Zero-voltage alarm contact for in-house alarm system
- Ethernet interface
- Elapsed time indicator
- 2 access ports, Ø 28 mm, rear

Available sizes:
Model UF V 500
Model UF V 700



Growth chambers

Homogeneous light in combination with a constant temperature and humidity is necessary to achieve ideal growth in plants or other organisms. A BINDER humidity chamber offers all this. This is how KBW Series growth chambers create ideal conditions for the culture using light and temperature. The KBWF series also offers a system for humidity regulation.

The APT.line™ preheating chamber from BINDER, in connection with fast-reacting humidity regulation, highly effective cooling and uniform light distribution, ensures natural growth conditions.

Series KBW | Growth chambers with light

Special features:

- Temperature range: 0 °C to 70 °C
- Positionable illumination cassettes, each with 5 fluorescent tubes
- Intuitive touchscreen controller with time-segment and real-time programming
- Door heating

Available sizes:
Model KBW 240 - 247 L
Model KBW 400 - 400 L
Model KBW 720 - 698 L

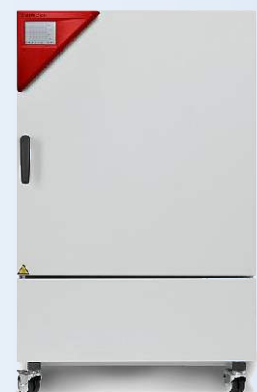


Series KBWF | Growth chambers with light and humidity

Special features:

- Temperature range: 0 °C to 70 °C
- Humidity range: 10 % to 80 % RH
- Humidity regulation with capacitive humidity sensor and vapor humidification
- Positionable illumination cassettes, each with 5 fluorescent tubes
- Intuitive touchscreen controller with time-segment and real-time programming
- Door heating

Available sizes:
Model KBWF 240 - 247 L
Model KBWF 720 - 700 L



Vacuum drying chambers

Both BINDER vacuum drying chamber models enable effective drying without residue or damaging the material being dried. With their proven technological features, they excellently address the strict requirements of industrial and scientific laboratories.

Samples and similar materials incorporating flammable and non-flammable solvents can be dried, depending on the individual use. The chambers use a unique safety design that, together with accustomed outstanding performance, sets the bar in terms of quality and safety.

Series VD | Vacuum drying chambers for non-flammable solvents

Special features

- Temperature range: room temperature plus 15 °C to 200 °C
- Controller with time-segment and real-time programming
- 2 aluminum expansion racks
- Inert gas connection
- Shatterproof, spring-mounted safety glass panel

Available sizes

Model VD 23 - 23 L
Model VD 53 - 53 L
Model VD 115 - 115 L



Series VDL | Vacuum drying chambers for flammable solvents

Special features

- Temperature range: room temperature plus 15 °C to 200 °C
- Controller with time-segment and real-time programming
- 2 aluminum expansion racks
- Inert gas connection
- Shatterproof, spring-mounted safety glass panel
- Expanded safety functions

Available sizes

Model VDL 23 - 23 L
Model VDL 53 - 53 L
Model VDL 115 - 115 L

Standard-Incubators

The completely redesigned Avantgarde.Line incubators with natural convection or forced convection are now the perfect solution when it comes to meeting growth and incubation requirements. With their exceptional efficiency and perfect temperature accuracy thanks to the very latest APT.line™ technology, this new generation of incubators has real appeal.

Series B Classic.Line | Standard-Incubators with mechanical adjustment

Special features

- Temperature range: 30 °C to 70 °C
- Hydro-mechanical thermostat
- Inner door made of tempered safety glass

Available sizes

Model B 28 - 28 L



Series BD Avantgarde.Line | Standard-Incubators with natural convection

Special features

- Temperature range: ambient temperature plus 5 °C to 100 °C
- Natural convection
- Controller with LCD display
- Electromechanical control of the exhaust air flap
- Class 3.1 integrated independent temperature safety device (DIN 12880) with visual alarm
- Excellent temporal and spatial temperature accuracy and high energy efficiency

Available sizes

Model BD 56 - 57 L
Model BD 115 - 112 L
Model BD 260 - 253 L
Model BD 720 - 737 L



Series BD Classic.Line | Standard-Incubators with natural convection

Special features

- Temperature range: room temperature plus 5 °C to 100 °C
- natural convection
- Adjustable exhaust air flap
- Controller with timer functions
- Inner door made of tempered safety glass
- Class 3.1 independent temperature safety device (DIN 12880) with visual temperature alarm

Available sizes

Model BD 23 - 20 L

Model BD 400 - 400 L



Series BD-S Solid.Line | Standard-Incubators with natural convection

Special features

- Temperature range: ambient temperature +5 °C to 70 °C
- APT.line™ preheating chamber technology
- Natural convection
- Adjustable exhaust air flap
- Controller with timer function

Available sizes

Model BD-S 56 - 62 L

Model BD-S 115 - 118 L



Series BF Avantgarde.Line | Standard-Incubators with forced convection

Special features

- Temperature range (model 56 | 260): ambient temperature plus 7 °C to 100 °C
- Temperature range (model 115): ambient temperature plus 8 °C to 100 °C
- Forced convection
- Controller with LCD display
- Electromechanical control of the exhaust air flap
- Class 3.1 integrated independent temperature safety device (DIN 12880) with visual alarm
- Excellent temporal and spatial temperature accuracy and high energy efficiency

Available sizes

Model BF 56 - 59 L

Model BF 115 - 114 L

Model BF 260 - 257 L

Model BF 720 - 734 L



Series BF Classic.Line | Standard-Incubators with forced convection

Special features

- Temperature range: room temperature plus 5 °C to 100 °C
- Adjustable fan speed
- Adjustable exhaust air flap
- Controller with timer functions
- Inner door made of tempered safety glass
- Class 3.1 independent temperature safety device (DIN 12880) with visual temperature alarm

Available sizes

Model BF 400 - 400 L



Cooling incubators

BINDER cooling incubators are gentle on samples and provide high-quality performance. Every KB Series cooling incubator thus makes safe, reproducible incubation possible, even at high ambient temperatures. Together with the efficient weekly program function, a cooling incubator from BINDER is truly versatile in laboratory work with microorganisms.

The KT Series combines exceptional performance with low energy consumption. Additionally, every BINDER cooling incubator offers true added value with its exemplary environmental sustainability.

Series KT | Cooling incubators with thermoelectric cooling

Special features

- Temperature range: 4 °C to 100 °C
- Electric cooling with Peltier module
- Adjustable fan speed
- Controller with time-segment and real-time programming
- Inner door made of tempered safety glass
- Data recording and USB interface

Available sizes

Model KT 53 - 53 L
Model KT 115 - 102 L
Model KT 170 - 163 L



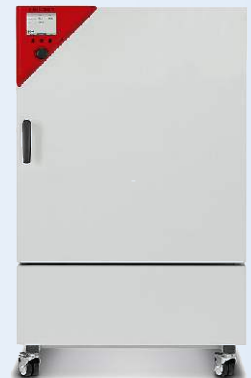
Series KB | Cooling incubators with compressor technology

Special features

- Temperature range: -5 °C to 100 °C
- Up to 30% lower energy consumption compared to the previous model
- Cooling with compressor cooling unit
- Adjustable fan speed
- Controller with time-segment and real-time programming
- Inner door made of tempered safety glass

Available sizes

Model KB 23 - 20 L
Model KB 53 - 53 L
Model KB 115 - 115 L
Model KB 240 - 247 L
Model KB 400 - 400 L
Model KB 720 - 698 L



Drying and Heating Chambers

BINDER drying chambers with natural convection or forced convection are renowned for their high quality and reliability. Thanks to their extensive redevelopment, these all-rounders are now even more firmly focused on addressing the requirements involved in drying or heating samples. What's more, in addition to the best energy efficiency on the market and convenient operation, the latest APT.line™ technology offers outstanding temperature accuracy to give this new generation of incubators real appeal.

SeriesE Classic.Line | Drying and heating chambers with mechanical adjustment

Special features

- Temperature range: 60 °C to 230 °C
- Adjustable exhaust air flap
- Hydro-mechanical thermostat
- Class 1 temperature limitation device (Model E028-230V-T)
- Timer 0–120 min

Available sizes

Model E 28 - 28 L



Series ED Avantgarde.Line |Drying and heating chambers with natural convection

Special features

- Temperature range: ambient temperature plus 5 °C to 300 °C
- Natural convection
- Controller with LCD display
- Electromechanical control of the exhaust air flap
- Class 2 integrated independent adjustable temperature safety device (DIN 12880) with visual alarm
- Excellent temporal and spatial temperature accuracy
- Up to 30% lower energy consumption compared to conventional units on the market

Available sizes

- Model ED 56 - 57 L
- Model ED 115 - 114 L
- Model ED 260 - 255 L
- Model ED 720 - 743 L



Series ED Classic.Line | Drying and heating chambers with natural convection

Special features

- Temperature range: room temperature plus 5 °C to 300 °C
- Natural convection
- Adjustable exhaust air flap
- Controller with timer functions
- Class 2 independent adjustable temperature safety device (DIN 12880) with visual alarm

Available sizes

- Model ED 23 - 20 L
- Model ED 400 - 400 L



Series ED-S Solid.Line | Drying and heating chambers with natural convection

Special features

- Temperature range: ambient temperature +7 °C to 250 °C
- APT.line™ preheating chamber technology
- Natural convection
- Adjustable exhaust air flap
- Controller with timer function

Available sizes

- Model ED-S 56 - 62 L
- Model ED-S 115 - 118 L



Series FD Avantgarde.Line | Drying and heating chambers with forced convection

Special features

- Temperature range: ambient temperature plus 10 °C to 300 °C
- Forced convection
- Controller with LCD display
- Electromechanical control of the exhaust air flap
- Class 2 integrated independent adjustable temperature safety device (DIN 12880) with visual alarm
- Excellent temporal and spatial temperature accuracy
- Up to 30% lower energy consumption compared to conventional units on the market

Available sizes

- Model FD 56 - 60 L
- Model FD 115 - 116 L
- Model FD 260 - 259 L
- Model FD 720 - 741 L



Series FD Classic.Line | Drying and heating chambers with forced convection

Special features

- Temperature range: room temperature plus 5 °C to 300 °C
- Forced convection
- Adjustable exhaust air flap
- Controller with timer functions
- Class 2 independent adjustable temperature safety device (DIN 12880) with visual alarm

Available sizes

- Model FD 23 - 20 L



Series FD-S Solid.Line | Drying and heating chambers with forced convection

Special features

- Temperature range: ambient temperature +10 °C to 250 °C
- APT.line™ preheating chamber technology
- Forced convection
- Adjustable exhaust air flap
- Controller with timer function

Available sizes

- Model FD-S 56 - 55 L
- Model FD-S 115 - 106 L



Series FED Avantgarde.Line | Drying and heating chambers with forced convection and enhanced timer functions

Special features

- Temperature range: ambient temperature plus 10 °C to 300 °C
- Adjustable fan speed
- Controller with LCD display and enhanced time functions
- Electromechanical control of the exhaust air flap
- Class 2 integrated independent adjustable temperature safety device (DIN 12880) with visual alarm
- Ethernet interface
- Up to 30% lower energy consumption compared to conventional units on the market

Available sizes

- Model FED 56 - 60 L
- Model FED 115 - 116 L
- Model FED 260 - 259 L
- Model FED 720 - 741 L



Series FED Classic.Line | Drying and heating chambers with forced convection and enhanced timer functions

Special features

- Temperature range: room temperature plus 5 °C to 300 °C
- Adjustable fan speed
- Adjustable exhaust air flap
- Controller with expanded timer functions
- Class 2 independent adjustable temperature safety device (DIN 12880) with visual alarm
- Computer interface: RS 422

Available sizes

- Model FED 400 - 400 L



Series FP Classic.Line | Drying and heating chambers with forced convection and program functions

Special features

- Temperature range: room temperature plus 5 °C to 300 °C
- Adjustable fan speed
- Adjustable exhaust air flap
- Controller with time-segment and real-time programming
- Class 2 independent adjustable temperature safety device (DIN 12880) with visual alarm
- Computer interface: RS 422

Available sizes

- Model FP 53 - 53 L
- Model FP 115 - 115 L
- Model FP 240 - 240 L
- Model FP 400 - 400 L
- Model FP 720 - 720 L



Series M Classic.Line | Drying and heating chambers with forced convection and advanced program functions

Special features

- Temperature range: room temperature plus 5 °C to 300 °C
- Adjustable fan speed
- Program-controlled ventilation flap
- Color LCD controller with time-segment programming
- Class 2 independent adjustable temperature safety device (DIN 12880) with visual alarm
- Computer interface: RS 422

Available sizes

- Model M 53 - 53 L
- Model M 115 - 115 L
- Model M 240 - 240 L
- Model M 400 - 400 L
- Model M 720 - 720 L

Thermo Scientific NanoDrop One Microvolume UV-Vis Spectrophotometers

Introducing — Acclaro Sample Intelligence Technology



Qualify nucleic acid samples

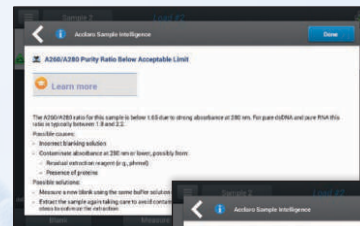
Accurate concentration and purity evaluation of RNA and DNA samples is critical to the success of your downstream experiments. Inadequate template loads and residual chemical reagents can lead to lengthy troubleshooting and costly delays. The NanoDrop One Acclaro Sample Intelligence technology delivers information on sample purity so that you can make informed decisions on sample use. Just tap the icons to learn more.



Accurate concentration and purity evaluation of RNA and DNA samples is critical to the success of your downstream experiments. Inadequate template loads and residual chemical reagents can lead to lengthy troubleshooting and costly delays. The NanoDrop One Acclaro Sample Intelligence technology delivers information on sample purity so that you can make informed decisions on sample use. Just tap the icons to learn more.

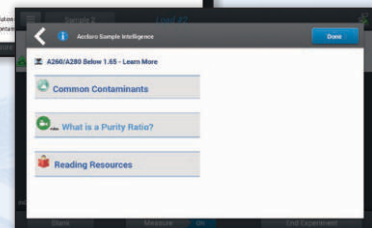
Acclaro information alert

Experience the convenience of having troubleshooting and technical support tools at your fingertips. Tap the information alert icon to explore Acclaro support tools.



The A260/A280 ratio of sample #3 is outside the acceptable range for pure DNA. Learn about possible causes and review recommended solutions.

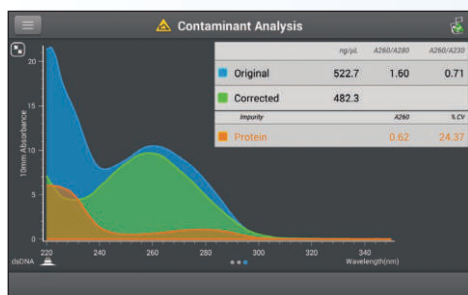
Acclaro support tools present possible sample contaminants and show how each contaminant can alter the sample spectrum.



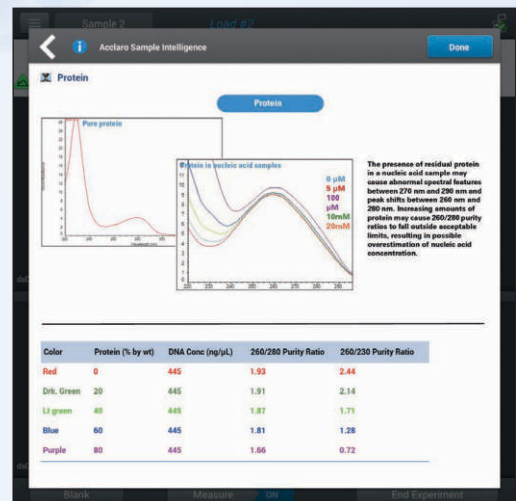
Acclaro contaminant alert

Acclaro Sample Intelligence technology uses sophisticated mathematical algorithms to analyze your sample data so that you can be:

- Notified when contaminants such as phenol and protein are present in your sample.
- Provided with a corrected analyte concentration value.



dsDNA sample contaminated with protein. The absorbance contribution from the protein (orange) is subtracted from the original result (blue) to obtain the corrected dsDNA concentration (green).



Is your DNA sample contaminated with protein? Learn how different concentrations of protein can affect sample spectra and purity ratios.

Thermo Scientific NanoDrop Products

Choose the NanoDrop instrument that's right for you



NanoDrop Lite Spectrophotometer



NanoDrop 2000 | 2000C Spectrophotometer



NanoDrop One | One C Spectrophotometer

Parameters	NanoDrop Lite	NanoDrop 2000 2000c	NanoDrop One One C
Instrument Type	Spectrophotometer	Spectrophotometer	Spectrophotometer
Instrument Control	Local control	Computer software	Built-in Touch Screen
Minimum Sample Size	1 μ L	0.5 μ L	1 μ L
Sample Number	1	1	1
Pathlength(s)	0.5 mm	0.05, 0.1, 0.2 and 1.0 mm, auto-ranging	0.5 mm
Light Source(s)	Light emitting diodes	Xenon flash lamp	Xenon flash lamp
Excitation Maxima of LEDs	N/A	N/A	N/A
Detector Type	Silicon photodiode	2048-element linear silicon CCD array	2048-element CMOS linear image sensor
Wavelength Range	260 and 280 nm	190 — 840 nm	190 - 850 nm
Wavelength Accuracy	N/A	± 1 nm	± 1 nm
Spectral Resolution	< 8.0 nm	≤ 1.8 nm (FWHM at Hg 253.7 nm)	≤ 1.8 nm (FWHM at Hg 254 nm)
Typical Measurement Reproducibility	0.002*	0.002*	0.002*
Absorbance Accuracy**	3% (at 1.05 Abs at 260 nm)	3% (at 0.74 Abs at 350 nm)	3% at 0.97 A, 302 nm
Absorbance Range (10 mm equivalent)	0-30 Abs	Pedestal: 0 — 300 Abs Cuvette: 0 — 1.5 Abs	Pedestal: 0—550 A Cuvette: 0—1.5 A
Fluorescence Range	N/A	N/A	N/A
Lower Limit of Detection	4 ng/ μ L (dsDNA) 0.12 mg/mL (BSA)	Pedestal: 2 ng/ μ L (dsDNA) 0.10 mg/mL (BSA) Cuvette: 0.4 ng/ μ L (dsDNA) 0.01 (BSA)	Pedestal: 2.0 ng/ μ L (dsDNA) Pedestal: 0.06 (0.03) mg/mL (BSA) Cuvette: 0.2 ng/ μ L (dsDNA) Cuvette: 0.006 (0.003) mg/mL (BSA)
Maximum Concentration	1,500 ng/ μ L (dsDNA) 45 mg/mL (BSA)	Pedestal: 15,000 ng/ μ L (dsDNA) 400 mg/mL (BSA)	Pedestal: 27,500 ng/ μ L (dsDNA) Pedestal: 820 (400) mg/mL (BSA)
Measurement Time	< 5 seconds	< 5 seconds	8 seconds
Footprint	16 x 11.5 cm	14 x 20 cm	20 x 25 cm
Weight	0.8 kg	2000: 2.0 kg 2000c: 2.1 kg	3.6 kg
Sample Pedestal Material of Construction	303 stainless steel and quartz fiber	303 stainless steel and quartz fiber	303 stainless steel and quartz fiber
Cuvette Position	N/A	Optional stirring: 150 — 850 rpm Heating: 37 \pm 0.5°C z-height: 8.5 mm	Available with C model
Operating Voltage	6 V (DC)	12 V (DC)	12 V (DC)
Operating Power Consumption	18W	12 — 18 W	12-18W
Standby Power Consumption	< 2.5 W	5W	5 W
Software Compatibility	Local control only	Professional versions of Windows® XP (32 bit) Service Pack 2 or later; Windows® Vista™ (32 bit); Windows® 7 (32 bit and 64 bit)	Local control and PC connectivity

GENESYS Vis and UV-Vis Spectrophotometers
Legendary reliability. Unrivalled usability.



Description		GENESYS 30	GENESYS 40	GENESYS 140	GENESYS 50	GENESYS 150	BioMate 160	GENESYS 180
Optical Design		Single Beam	Dual Beam				Double Beam	
Spectral Bandwidth		5 nm				2 nm		
Light source (Typical Lifetime)		Tungsten-Halogen (>1000 hours)				Xenon Flash Lamp (>5 years typical, 3 years guaranteed)		
Detector		Silicon Photodiode	Dual Silicon Photodiodes					
Wavelength	Range	325–1100 nm			190–1100 nm			
	Accuracy	±2 nm	±0.5 nm					
	Repeatability	<±1 nm	<±0.2 nm					
	Scan Speed	Automatic—up to 1200 nm/min	Automatic- up to 1800 nm/min			Slow, medium and fast (up to 1600 nm/min)		
	Data Resolution	1 nm	0.2 nm, 0.5 nm, 1 nm, 2 nm, 5 nm				0.1 nm, 0.2 nm, 0.5 nm, 1 nm, 2 nm, 5 nm	
Photometric	Range	–3A to +3A	–3A to +3.5A		–2A to +3.5A			
	Display	–3A to +3A, 0 to 200 000 %, 0 to 9 999 999 C	–3A to +5A					
	Accuracy	±0.002A (0–0.3A) 0.5% of ABS reading (0.301A–2.5A)	±0.002A at 0.5A ±0.004A at 1.0A ±0.008A at 2.0A					
	Repeatability ¹	±0.002 A	±0.001A at 1A					
	Noise ²	≤0.001A at 0A ≤0.001A at 1A ≤0.002A at 2A	≤0.00020A at 0A at 260 and 500 nm ≤0.00030A at 1A at 260 and 500 nm ≤0.00040A at 2A at 260 and 500 nm					
	Drift ³	<0.002A/Hr	<0.0010A/Hr			<0.0005A/Hr		
Stray Light		<0.1%T at 340 nm and 400 nm	<0.05%T at 340 nm and 400 nm		<1.0%T 198 nm (KCl), <0.05%T at 220 nm (NaI), <0.03%T at 340 nm			
Baseline Flatness		<0.003A	±0.005A		±0.002A			
Display		5-inch diagonal, 32-bit color display, 800 × 480 pixels	7-inch color touchscreen, fixed, high definition, 800 1280 pixels	7-inch color touchscreen, tiltable, high definition, 800 1280 pixels	7-inch color touchscreen, fixed, high definition, 800 1280 pixels	7-inch color touchscreen, tiltable, high definition, 800 × 1280 pixels		
Languages		English (Available soon: Spanish, German, French, Italian, Portuguese, Russian, Chinese, Japanese, Korean, Thai)						
Dimensions		35.5 × 38.5 × 19.5 cm (L x W x H)						
Weight		7.5 kg						
Power Requirements		External AC to DC converter. Voltage and Frequency (Hz) selected automatically, 100–240 volts, 50–60 Hz.						
Warranty		2 years standard with 1 year extension upon registration of the instrument with Thermo Fisher Scientific within 6 months of purchase						

Evolution UV-Visible Spectrophotometers



Specifications	Evolution 201 UV-Visible Spectrophotometer	Evolution 220/260(Bio Software) UV-Visible Spectrophotometer	Evolution 350 Spectrophotometer
Optical Design	Double-beam with sample and reference cuvette positions; Czerny-Turner Monochromator	Double-beam with sample and reference cuvette positions; Application Focused Beam Geometry; Czerny-Turner Monochromator	Modified Ebert Double beam with sample and reference cuvette/accessory positions
Spectral Bandwidth(s)	1.0 nm	Variable: 1 nm; 2 nm;	Selectable 0.5, 1.0, 1.5, 2.0, 4.0 nm
Light Source	Xenon flash lamp, 3-year warranty (5 years typical lifetime)		
Detector	Dual Silicon Photodiodes		Detector dual-matched silicon photodiodes
Scan Ordinate Modes	Absorbance, % Transmittance, % Reflectance, Kubelka-Munk, log (1/R), log (Abs), Abs*Factor, Intensity		
Resolution	>1.6 (peak-to-valley ratio; toluene in hexane)		>3A (peak-to-trough ratio >1.8 @1nm SBW setting)
Wavelength Range	190–1100 nm		
Accuracy	±0.8 nm (full range 190 to 1100 nm) ±0.5 nm (546.11 nm mercury line)		±0.20 nm (546.07 nm Hg emission line) ±0.30 nm, 190–900 nm
Repeatability	±0.1 nm (546.11 nm mercury line, SD of 10 measurements)		Standard deviation of 10 measurements <0.05 nm
Scanning Speed	<1 to 6000 nm/min; variable		Variable, up to 6000 nm/min
Data Intervals	10, 5, 2, 1.0, 0.5, 0.2, 0.1 nm		10, 5, 2, 1, 0.5, 0.2, 0.1, 0.05 nm
Photometric Range	>3.5 A		>4 A
Display Range	-0.3 to 4.0 A		±6 A
Accuracy Instrument	0.5 A: ±0.004 A 1A: ±0.006 A 2A: ±0.010 A Measured at 440 nm using neutral density filters traceable to NIST/NPL		1A: ±0.004 A 2A: ±0.004 A 3A: ±0.006 A
Noise	0A: ±0.00015 A 1A: ±0.00050 A 2A: ±0.00080 A 260 nm, 1.0 nm SBW, RMS		0A: <0.00018 A 1A: <0.00022 A 2A: <0.00050 A 500 nm, 2.0 nm SBW, RMS
Drift (Stability)	<0.0005 A/hr 500 nm, 1.0 nm SBW, 1 hour warm-up		<0.0005 Abs/hour, 500 nm, 2.0 nm SBW, 2 hour warm-up
Stray Light	KCl, 198 nm: ±1% T NaI, 220 nm: ±0.05% T NaNO ₂ , 340 nm: <0.05% T		198 nm: 2.4 A KCl 220 nm: 3.5 A NaI 340 nm: 4.0 A NaNO
Baseline Flatness	±0.0010 A 200–800 nm, 1.0 nm SBW, smoothing		±0.0015 A (200–800 nm) 2.0 nm SBW, smoothed
Dimensions	62.2 cm L · 48.6 cm W · 27.9 cm H (24" L · 19" W · 11" H)		61 × 53 × 38 cm
Weight	14.4 kg (32 lb)		22 kg
Electrical Supply	100–240 V, 50–60 Hz, selected automatically 150 W maximum		100–240 V, 50–60 Hz

PHARMACY FREEZER



Features

- External temperature controller
- Optional digital controller available
- Multi-positional shelving system
- Unique Top to Bottom view with minimal wastage of storage space
- Low power consumption

Technical Specifications

Model	Pharmacy Refrigerators					
	CFKS 471	FKG 110	FKG 320A	FKG 371	FKG 400	FKG 1000S
Capacity (ltrs.)	381	110	320	381	400	950
Dimen. W x D x H (inches)	23 x 23 x 73	20 x 23 x 34	23 x 23 x 67	24 x 23 x 73	24 x 23 x 78	47 x 28 x 76
Temperature range	+2 to + 8°C	0 to +10°C	0 to +10°C	+2 to + 8°C	0 to +10°C	0 to +10°C
Castors	Rear only			Rear only		
Lock	Yes	Yes	Yes	Yes	Yes	Yes
Rated Load, W	300	135	210	350	330	100
No. of shelves/drawers/baskets	6	1+2	4	6	4	5+5
No. & type of door / lid	1 (Solid)	1 (Glass)	1 (Glass)	1 (Glass)	1 (Glass)	2 (Glass)
Refrigerant	R134a			R134a/R600a		
Digital display & controller	Display	-	-	No	-	-
Visual & Acoustic Alarm	No	No	No	No	No	No
Battery back up (in case of power cut)	No	No	No	No	No	No
Chart recorder	Optional	Optional	Optional	Optional	Optional	Optional
Data logger & USB data Transfer	No	No	No	No	No	No
Certification	CE	CE	CE	CE	CE	CE
WHO PQS Code						

• Specifications, features, models and colours are subject to change, without any prior notice, due to continuous product development.

FREEZER



BFS 150



BFS 345S

Features

- Temperature controller
- Optional digital controller
- Shelves in the upper portion and pull-out drawers in the lower portion in BFS-345
- Pull-out drawers in BFS-1 50

Extremely popular in pharmaceutical / bio-technology applications and in research labs.

Technical Specifications

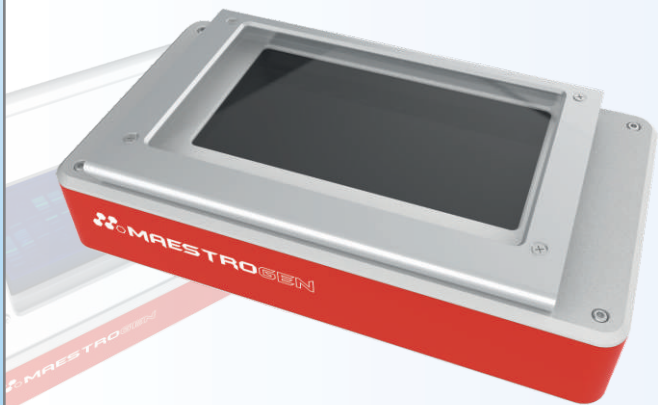
Specification	Product / Model	Solid Door Upright Freezer	
		BFS-345*	BFS-50
CAPACITY (in litres)		344	148
DIMENSION (in inches)	Height	72.8	48.4
	Width	23.4	20.3
	Depth	23.4	24.0
TEMPERATURE RANGE**		-17°C ~ -24°C	
WHEELS		Yes (Rear)	No
LOCK		Optional	No
DEFROST		Manual	Manual
RATED LOAD, WATTAGE		140	160
NO. OF SHELVES / DRAWERS		8	5
NO. OF LIDS/ DOORS		2	1

* Imported under Vestfrost brand; other models imported under Celfrost brand
 ** Under Standard Test Conditions
 • Specifications, features and colours are subject to change without any notice, due to continuous product development.
 • Power supply requirements for all models : 220 Volts, 50 Hz, Single Phase

UltraSlim® UV

TRANSILLUMINATOR

UltraSlim UV transilluminator is a single-handedly take transilluminator with a high sensitivity performance to 1ng. A new-design UV blocking metal cover which is easily detachable for access to the work surface. UltraSlim UV transilluminator is an especially for electrophoresis mini-gel size and easy to observation or gel-cutting.



SPECIFICATION

Cat. No.	Wavelength(nm)	Light Source	Viewing size(mm)
UUV-01	302nm	UV lamp (T5-6W)	150 x 80MM

Uniformity: +/- 5 % CV
 Blocking Cover: Stainless steel metal frame
 Filter: UltraSafe UV Blocking (cover 99.99% UV transmittance)
 Power: DC12V / 1.5A
 Dimensions (mm) 247 (D) x 132 (W) x 48 (H)
 Weight (Kg) 1.4

UltraBright® UV

TRANSILLUMINATOR

Maestrogen UV Transilluminators are the first choice for analytical applications with gel-cutting construction for increased performance and efficiency.

Optimized for use with nucleic acid and protein stains such as MaestroSafe, EtBr, SYBR Safe, SYBR Gold, SYBR Green I & II, SYPRO Ruby, SYPRO Orange, Coomassie Fluor™ Orange stains, GelGreen, GelRed and Lumitein™ Protein Gel Stain acid and protein stains.



SPECIFICATION

Cat. No.	Wavelength(nm)	Light Source	Viewing size(mm)
MLB-21	302(5), 365(6)	11 x 8W	210(D) x 260(W)
MLB-16	302(4), 365(5)	9 x 8W	160(D) x 200(W)
MB-21	302	6 x 8W	210(D) x 260(W)
MB-16	302	5 x 8W	160(D) x 200(W)

Blocking Cover: Aluminum alloy metal frame
 Filter: UltraSafe UV Blocking (cover 99.99% UV transmittance)
 Light Intensity: 100%, 50%
 Power: AC100~240 V, 50~60 Hz
 Weight: 4.3 Kg



2B Nucleofector System

The Nucleofector™ Device is the single cuvette based system that has been used in research labs since 2001. It allows efficient transfection of hard-to-transfect cell lines and primary cells with different substrates (e.g., DNA vectors or siRNA oligonucleotides) in low-throughput format.

The Nucleofector™ 2b Device (or older generations I or II) can also be used for bacteria transformation by using alternative cuvettes.

There are cell type-specific Optimized Protocols or recommendations available in our knowledge database. In these Optimized Protocols the best Nucleofection conditions are indicated. In addition, we share our experience and knowledge for treatment of individual cell types.



Applications

- Low-throughput transfection in single cuvette format
- Transfection of plasmid DNA, siRNA, shRNA, miRNA, RNA and more, e.g., Morpholinos
- Transfection of peptides, proteins or small molecules
- Approaching 4,000 peer-reviewed publications
- Suited for bacteria transformation

Cat. No.	Description
AAB-1001	2B Nucleofector System

4D Nucleofector System

The 4D-Nucleofector™ Core Unit is the controlling unit of the 4D-Nucleofector™ System. The different functional units can be added in a modular way to the 4D-Nucleofector™ Core Unit and each is suited for different applications:

- X Unit: Supporting Nucleofection of various cell numbers in different formats (16-well Nucleocuvette™ Strips or 100 µL Nucleocuvette™ Vessels)
- Y Unit: Enabling adherent Nucleofection in 24-well culture plates

Transfections per minute:

- X Unit (16-well Nucleocuvette™ Strips): 16-32 reactions
- X Unit (100 µL Nucleocuvette™ Vessels): 20-26 reactions
- Y Unit (Dipping Electrodes): 8-10 reactions



Cat. No.	Description
AAF-1002B	4D-Nucleofector™ Core Unit
AAF-1002X	4D-Nucleofector™ X Unit
AAF-1002Y	4D-Nucleofector™ Y Unit

The Lucetta™ 2 Luminometer

The Lucetta™ 2 Luminometer is a single tube luminometer developed for the detection of bioluminescence and chemiluminescence. It can be used as a portable battery-operated instrument as well as with an external power supply and is suitable for detecting all luminescence.

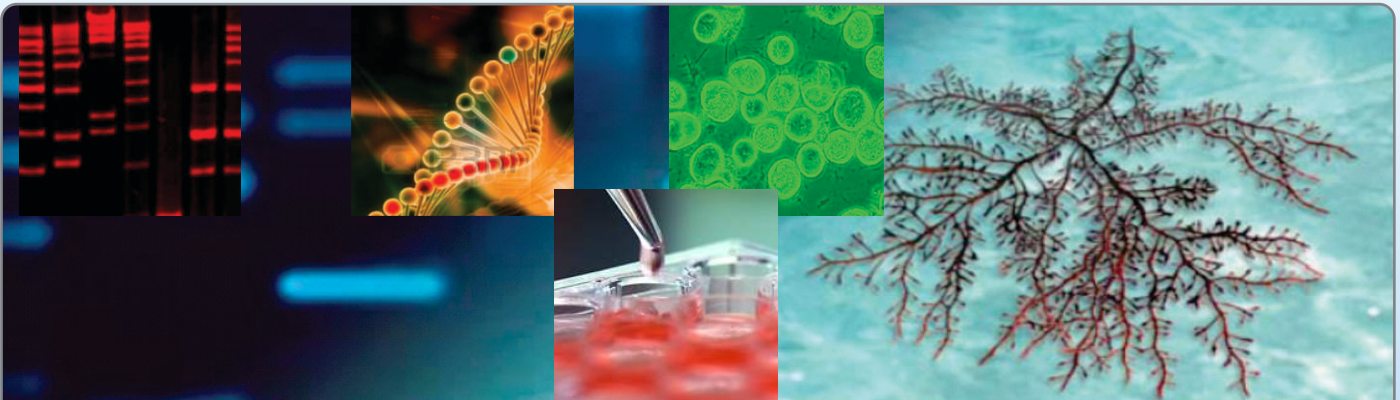
The Lucetta™ 2 Luminometer can also be used for many other luminescence-based assays, such as cell proliferation and cytotoxicity assays or luciferase reporter gene assays. For these assays, the instrument's single read mode applies.

Applications

- MycoAlert™ Mycoplasma Detection Assays
- ATP assays, e.g. ViaLight™ Cell Proliferation and Cytotoxicity Assay
- Adenylate Kinase assays, e.g. ToxiLight™ Non-destructive Cytotoxicity Assay
- Luciferase reporter gene analysis



Cat. No.	Description
AAL-1002	The Lucetta™ 2 Luminometer

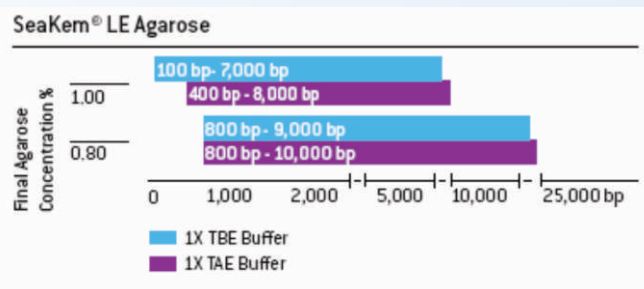


SeaKem LE Agarose

It is the ideal multipurpose, molecular biology grade agarose for any DNA or RNA application.
Wide resolution range: 100 bp to 23 kb
High gel strength – Ideal for Southern and Northern blotting

Application:

Broad range fragment separation
Southern and Northern blotting
PCR greater than 1 kb
Immunoprecipitation techniques
Colony lifts



Cat. No.	Description
50004	Seakem LE Agarose 500 gm

MetaPhor® Agarose

MetaPhor® Agarose

MetaPhor® Agarose is a high resolution agarose that challenges polyacrylamide. MetaPhor® Agarose is an intermediate melting temperature (75°C) agarose with twice the resolution capabilities of the finest-sieving agarose products

Application:

Ultra fine resolution of small fragments
Ultra fine resolution—detects 2% size difference in fragments 20 bp to 800 bp
Rivals the resolution of polyacrylamide
Ideal for small PCR and STR analysis

Cat. No.	Description
50180	MetaPhor® Agarose 125 gm
50184	MetaPhor® Agarose 500 gm

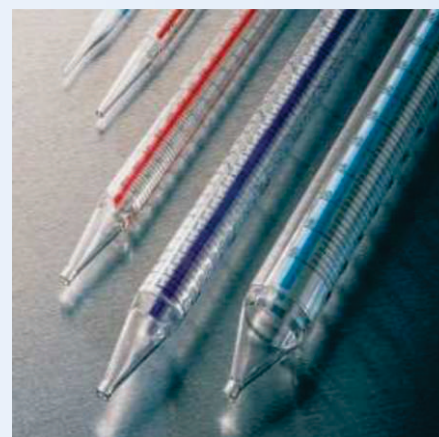
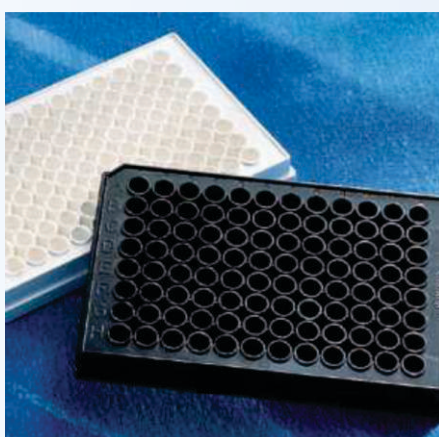
BioWhittaker™ Classical Media

Cat. No.	Description
12-604F	DMEM with 4.5 g/L glucose, with L-Glutamine, 500gm
12-702F	RPMI 1640 Medium with L-Glutamine, 500gm
12-115F	RPMI 1640 Medium with L-Glutamine and 25ml HEPES, 500gm



CELL CULTURE

- Cell Culture Flasks
- Cell Culture Dishes
- Multiple Well Plates
- Transwell® Permeable Supports
- Culture Tubes
- Roller Bottles
- CellSTACK® Culture Chambers
- CellCube® Systems
- E-Cube™ Culture System
- Spinner Flasks
- Erlenmeyer Flasks
- Cell Scrapers and Lifters
- Spatulas and Microspatulas
- Pipets
- Cryogenic Vials and Accessories
- Centrifuge Tubes



MICROPLATES

96 Well Microplates

- General Assay
- Cell Culture
- Immunoassay
- Storage

384 Well Microplates

- General Assay
- Cell Culture
- Storage

1536 Well Microplates

Protein Crystallization Microplates



LIQUID HANDLING

- Pipet Tips
- Reagent Reservoirs
- Transtar-96® Well Liquid
- Transfer Systems
- Aspirator
- Vacuum Filters
- Spin-X® Centrifuge Tube Filters
- Storage Bottles
- Containers
- Cylinder
- Erlenmeyer Flasks



Corning® Sample Cooling and Heating Systems – Cool Products

Corning® CoolCell®

Corning CoolCell, in combination with a -80°C freezer, will provide alcohol-free freezing at the rate of -1°C/minute that is ideal for cryopreservation of most cells and cell lines. Using a combination of uniform-density cross-linked polyethylene foam, a solid state core, and radial vial symmetry, freezing profiles are consistent and reproducible. The foam is non-absorbent and will impose negligible change in the freezer environment; thereby protecting nearby frozen samples. The removal of vials is accomplished by tipping the device upside down so the vials slide out



Corning CoolRack Thermo-conductive Modules

Corning CoolRack thermo-conductive modules eliminate variability which originates from tubes or wells placed directly into ice, dry ice, alcohol baths, water baths, and other temperature sources. Place the thermo-conductive modules directly onto a temperature source and it will rapidly adapt to that temperature, ensuring temperature uniformity across all tubes and plates.



CoolBox Sample Cooling Systems

Corning CoolBox is an open-platform cooler that accommodates most CoolRack and CoolSink thermo-conductive sample modules. The CoolBox systems come in a variety of sizes and have a wide range of accessories available,



Corning Ice Buckets and Pans

- Made of recyclable non-toxic EVA foam (ethylene vinyl acetate)
- Odorless and will not “sweat” or deform
- Use with ice, dry ice, liquid nitrogen, alcohol or saline solutions
- Highly insulative, stackable, unbreakable, lightweight and leak-proof

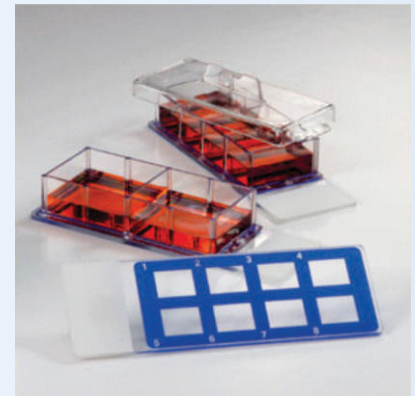


Falcon Cultureware

- Cell Culture Flasks
- Flasks
- Multi-Flasks
- Flask Caps
- CultureSlides
- Cell Culture Dishes
- Plates and Microplates
- Cell Scrapers
- In Vitro Fertilization Plasticware
- Corning[®] Primaria[™] Cultureware
- Cell Culture Inserts
- Inserts and Companion Plates
 - 24 Multiwell Insert Systems
 - 96 Multiwell Insert Systems
 - Corning FluoroBlok[™] Cell Culture Inserts
 - Corning FluoroBlok 24 Multiwell Insert Systems
 - Corning FluoroBlok 96 Multiwell Insert Systems

Additional Falcon Labware

- Bacteriological Petri Dishes
- Cell Strainers and Containers
- Library Storage Plates
- Serological Pipets
- Individually Wrapped Serological Pipets
- Bulk-Packaged Serological Pipets
- Falcon[®] Tubes
- Round-Bottom Tubes
- Conical Tubes



Axygen Genomics Liquid Handling

AUTOMATION TIPS

PCR CONSUMABLES

96 Well PCR Plates

384 Well PCR Plates

PCR Tubes and Strip Tubes

PCR Plate Compatibility Chart

STORAGE

Deep Well and Assay Plates

Reagent Reservoirs

Compound Library Storage-

Mini Tube System

SEALING SOLUTIONS

AxyMat™ Sealing Mats

ImpermaMat™ Sealing Mats

Sealing Films

Platemax™ Heat Sealing Films

Heat Sealing Films, Roll

PIPET TIPS

Tip Refill System

Microvolume Tips

Universal Fit

Aerosol Barrier Tips

Multi-Barrier Tips

Macrovolume Tips

Axypet-16 384-Format Tip

Gel Loading and Gel Cutting Tips

Pipettors

Reagent Reservoirs

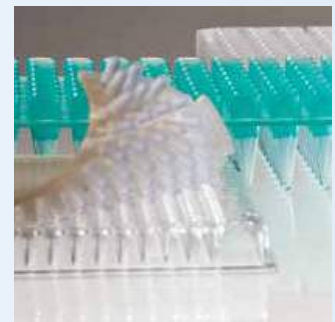
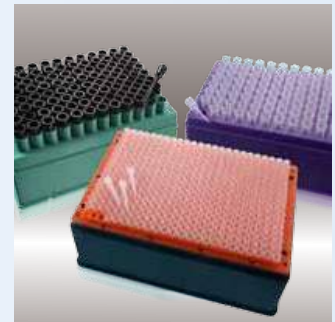
MICROTUBES

Snaplock Microcentrifuge Tubes

Screw Cap Tubes Caps

Centrifuge and Transport Tubes

AxyRacks



A

Aspirators
Autoclaves

B

Balances
Biosafety Cabinet
BOD Incubator

C

Centrifuge
Chillers
CO₂ Incubator
Cold Cabinets
Colony Counter
Conductivity meter

D

Deep Freezers
Dispensors
Dry Baths

E

Electrophoresis System

F

Flame Photometer
Fume Hood

G

Gel Documentation

H

Heating Mantle
Homogenizer
Hot Plate
Hybridization Oven

I

Icematic Machine

K

Karl Fisher Titrator
Kjeldahl Digestion Unit

L

Laminar Air Flow
Liquid Nitrogen Container

M

Magnetic Serrer
Microscope
Mixer

O

Osmometer
Ovens

P

pH Meter
Pipettes and Pipettors
Polarimeter
Power Supply
Pumps

R

Refractometer
Rotary Evaporator
Rocker
Rotator

S

Shaker Incubator
Solvent Extractor
Spectrophotometer

T

TDS Meter
Thermal Cycler
TOC Analyser

U

ULT Freezers
Ultracentrifuge
Ultrasonic Bath
UV/PCR Cabinets
U V Crosslinker
U V Transilluminator

V

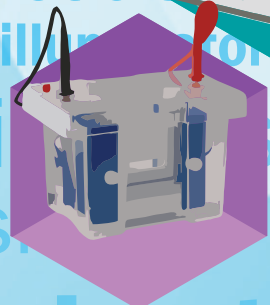
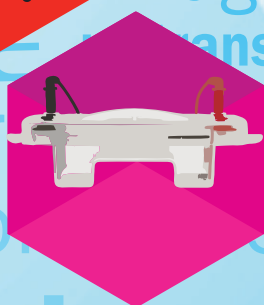
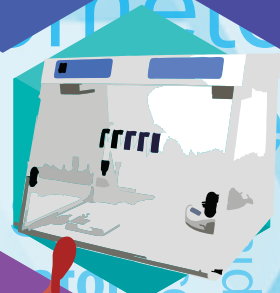
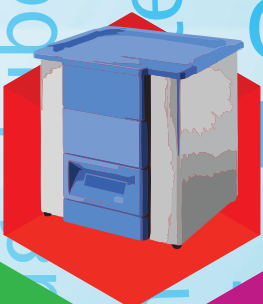
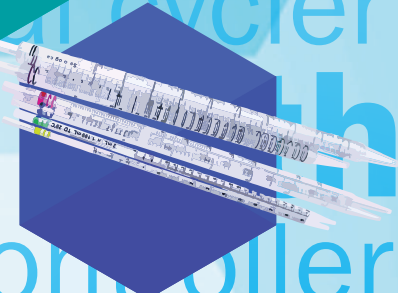
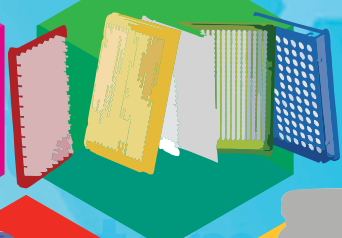
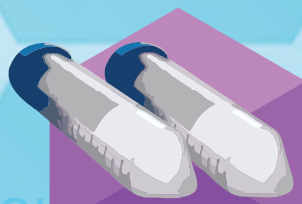
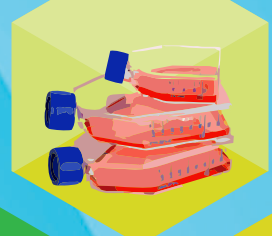
Vacuum Gel Dryer
Viscometer

W

Water Bath & Circulators

GINGER™

Making Science Lively



GINGER SCIENCE PVT LTD

LGF-6-8, Jinkushal Suri Complex, 230-A, Masjid Moth, South Ex-II, New Delhi-110049

Tel:+91 11-26263236/26253236

Email: sales@gingerscience.co.in | Website: www.gingerscience.co.in

V.010819