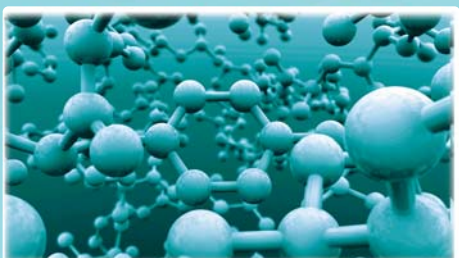
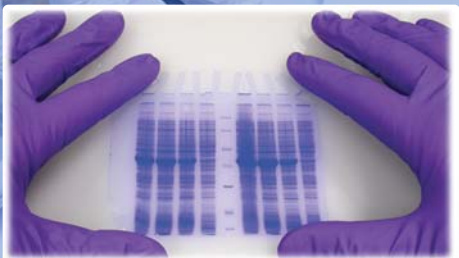


# ENDURO™

SEMI-DRY BLOTTER



- Western, Southern and Northern Blots
- Rapid transfer times
- Uniform heat dispersion
- Variable gel thickness
- Minimal buffer volume

simply reliable

# ENDURO™

## SEMI-DRY BLOTTER

The Enduro™ Semi Dry Blotter provides great flexibility in a lab since it can be used for all types of blotting: Western, Southern, and Northern. Blotting with the Enduro™ Semi Dry Blotter typically can be done in 15 to 30 minutes making it a fast and easy way to do all your blotting applications. Set up procedures are easy and economical with little buffer needed. The screw down lid adjusts to varying gel thicknesses and sizes while the platinum coated electrodes provide uniform pressure ensuring even transfers. To provide your lab with total blotting solutions use with our Enduro™ 250V, 3000mA high current power supply.

### TECHNICAL SPECIFICATION

Dimensions (LxWxH)	32.5 x 25 x 5.5 cm
	12.8 x 9.8 x 2.2 in
Buffer Volume	20 mL
Sample Capacity	4 Blots: 8 x 8.5 cm
	2 Blots: 16 x 8.5 cm
	1 Blot: 16 x 17.5 cm



### ORDERING INFORMATION

Cat. no.	Description
E2020-SDB	Enduro Semi-Dry Blotter
E0203	Enduro Model 250V Power Supply 250V, 3A, 300W programmable with timer
R1000-10BP	Enduro MW Marker, 10bp ladder (100 - 2,000 bp), 0.1 µg/µl, 500 µl vial
R1000-1KB	Enduro MW Marker, 1 kb ladder (300 - 10,000 bp), 0.1 µg/µl, 500 µl vial

### ALSO AVAILABLE



Cat no.  
S0600

## ENDURO™

### MINIMIX 3D BLOTTER

- Designed for processing blots and staining gels
- Optimal fixed speed and tilt
- Three dimensional motion
- Three blot boxes perfect for protein gels

31 Mayfield Avenue Edison-NJ 08837-USA

US toll free: 888-LABNET1(522-6381)

phone: +1-732-417-0700 email: Labnetinfo@corning.com www.labnetinternational.com