



222DS Benchtop Shaking Incubator



- **Exceptional versatility**
Large selection of options
- **SmartChek™ Software**
Controls and monitors
- **Compact design**
Opens under shelves
- **Flexibility**
Control from Keypad or Software

simply reliable

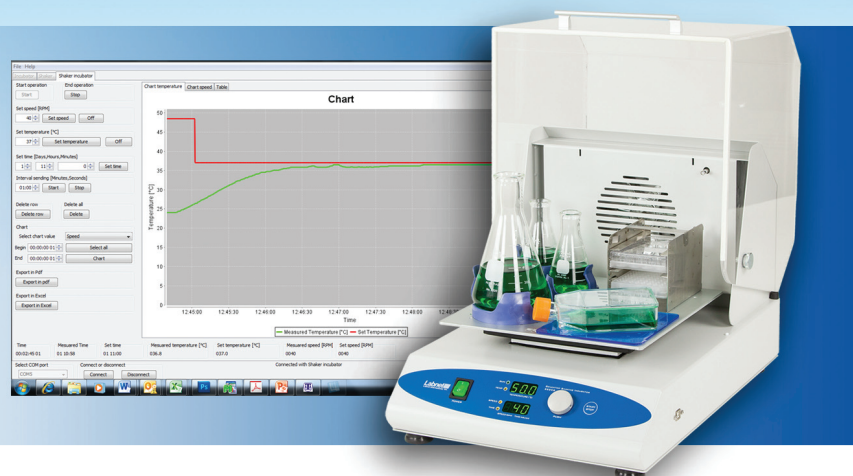
222DS Benchtop Shaking Incubator

CATALOG NO.	DESCRIPTION
I-5222-DS	222DS Benchtop Shaking Incubator - 115 V
I-5222-DS-230V	222DS Benchtop Shaking Incubator - 230 V

ACCESSORIES	
I-5230-DS	Universal Platform 30 x 30 cm (11.8 x 11.8 in)
I-5220	Petri Dish Shelf
I-5240	Sticky Mat - 15 x 15 x 3 cm (5.9 x 5.9 in)
I-5250	Microtiter hotel - 3 x microplates stacked individually
I-5260	Combi Tube Holder 6 x 15/50 ml tubes
I-2041-1000	Plastic Flask Clamp 1000ml
I-2041-500	Plastic Flask Clamp 500ml
I-2041-250	Plastic Flask Clamp 250ml
I-2041-125	Plastic Flask Clamp 125ml

TECHNICAL SPECIFICATIONS	
Model	222 DS
Speed	20 – 300 RPM
Orbit	Circular, 19 mm (3/4 in)
Temp Range	Ambient +5°C - 70°C
Temp Increments	0.1°C
Temp Accuracy	± 0.5°C
Temp Uniformity	± 0.5°C
Speed Increments	1 RPM
Platform Dimensions	30 x 30 cm (11.8 x 11.8 in)
Operation Temp Range	4°C - 65°C
Dimensions (W x D x H)	37 x 53 x 40 cm (14.6 x 20.9 x 15.7 in)
Weight	19.5 kg (43 lb)
Height lid open	55 cm (21.7 in)
USB temp monitor	Yes with included SmartChek™ software. Windows PC not included.
Timer	1 min – 99 hours or continuous
Open door lid cutoff switch	Yes
Warranty	2 years

SmartChek™ software included with system is not required for control, but easily installed on Windows PC to monitor temperatures and RPM.



Phone toll free: 888-LABNET1 Fax: 732-417-1750
 International: +1-732-417-0700 Fax +1-732-417-1750
 labnetinfo@corning.com • www.labnetinternational.com

Labnet
 Labnet International, Inc.